

2V0-620.exam.115q

Number: 2V0-620  
Passing Score: 800  
Time Limit: 120 min



**Website:** <https://vceplus.com>  
**VCE to PDF Converter:** <https://vceplus.com/vce-to-pdf/>  
**Facebook:** <https://www.facebook.com/VCE.For.All.VN/>  
**Twitter :** [https://twitter.com/VCE\\_Plus](https://twitter.com/VCE_Plus)

<https://vceplus.com/>

2V0-620

vSphere 6 Foundations Exam

## Exam A

### QUESTION 1

By default, each ESXi 6.x host is provisioned with a certificate from which root certificate authority?

- A. RedHat Certificate Authority
- B. VMware Certificate Authority
- C. DigiCert Certificate Authority
- D. Verisign Certificate Authority

**Correct Answer:** B

**Section:** (none)

**Explanation**

#### Explanation/Reference:

Explanation:

In vSphere 6.0 and later, the VMware Certificate Authority (VMCA) provisions your environment with certificates. This includes machine SSL certificates for secure connections, solution user certificates for authentication to vCenter Single Sign-On, and certificates for ESX hosts that are added to vCenter Server.

Reference <https://pubs.vmware.com/vsphere-60/index.jsp?topic=%2Fcom.vmware.vsphere.security.doc%2FGUID-3AF7757E-A30E-4EEC-8A4128DA72102520.html>

### QUESTION 2

Which vSphere 6 Enterprise Edition feature will allow an organization to ensure that critical multi-threaded applications have the maximum possible uptime?



<https://vceplus.com/>

- A. Fault Tolerance
- B. High Availability
- C. Distributed Resource Scheduler
- D. App HA

**Correct Answer:** B

**Section:** (none)

**Explanation**

**Explanation/Reference:**

Explanation:

High availability is a permanent feature of vSphere 6 Enterprise edition and it allows critical multi-threaded applications to get maximum possible uptime.

Reference <http://www.vladan.fr/how-to-configure-vmware-high-availability-ha-cluster/>

### QUESTION 3

Which vSphere 6 Standard Edition feature will allow an organization to ensure that critical multi-threaded applications have the maximum possible uptime?

- A. Fault Tolerance
- B. High Availability
- C. Distributed Resource Scheduler
- D. App HA

**Correct Answer:** B

**Section:** (none)

**Explanation**

**Explanation/Reference:**

Explanation:

High availability is a permanent feature of vSphere 6 standard edition and it allows critical multi-threaded applications to get maximum possible uptime.



### QUESTION 4

Which vSphere 6.x feature will allow an organization to utilize native snapshots?

- A. Virtual Volumes
- B. Virtual SAN
- C. VMFS3
- D. VMFS5

**Correct Answer:** A

**Section:** (none)

**Explanation**

**Explanation/Reference:**

Virtual Volumes has the following characteristics:

- Virtual Volumes supports offloading a number of operations to storage hardware. These operations include snapshotting, cloning, and Storage DRS.
- With Virtual Volumes, you can use advanced storage services that include replication, encryption, deduplication, and compression on individual virtual disks.
- Virtual Volumes supports such vSphere features as vMotion, Storage vMotion, snapshots, linked clones, Flash Read Cache, and DRS.
- With Virtual Volumes, storage vendors can use native snapshot facilities to improve performance of vSphere snapshots.
- You can use Virtual Volumes with storage arrays that support vSphere APIs for Array Integration (VAAI).
- Virtual Volumes supports backup software that uses vSphere APIs for Data Protection (VADP).

Reference [https://kb.vmware.com/selfservice/microsites/search.do?language=en\\_US&cmd=displayKC&externalId=2113013](https://kb.vmware.com/selfservice/microsites/search.do?language=en_US&cmd=displayKC&externalId=2113013)

#### QUESTION 5

What is the effective vSphere licensing level during the 60 day evaluation period?

- A. vSphere Foundation Essentials Plus
- B. vSphere Standard
- C. vSphere Enterprise
- D. vSphere Enterprise Plus

**Correct Answer:** D

**Section:** (none)

**Explanation**



**Explanation/Reference:**

Explanation:

The evaluation mode provides the set of features equal to a vSphere Enterprise Plus license. Before the evaluation mode expires, you must assign to your hosts a license that supports all the features in use.

Reference: <https://pubs.vmware.com/vsphere-55/index.jsp?topic=%2Fcom.vmware.vsphere.upgrade.doc%2FGUID-17862A54-C1D4-47A9-88AA2A1A32602BC6.html>

#### QUESTION 6

An administrator deploys vCenter Server using the embedded Platform Services Controller. After testing the deployment for a couple of months, it is determined that the environment would be better served with an external Platform Services Controller.

What should the administrator do to meet this new requirement?

- A. Deploy a fresh instance of vCenter Server with an external Platform Services Controller.
- B. Perform a fresh install of an external Platform Services Controller.
- C. Migrate the embedded Platform Services Controller to an external Platform Services Controller.
- D. Upgrade the embedded Platform Services Controller to an external Platform Services Controller.

**Correct Answer:** D

**Section:** (none)

**Explanation**

**Explanation/Reference:**

Explanation:

To meet the requirement, upgrade the embedded platform services controller to an external platform services controller

Reference: [https://kb.vmware.com/selfservice/microsites/search.do?language=en\\_US&cmd=displayKC&externalId=2113115](https://kb.vmware.com/selfservice/microsites/search.do?language=en_US&cmd=displayKC&externalId=2113115)

### QUESTION 7

An administrator is installing vCenter Server for an environment that has 40 ESXi 6.x Hosts and 150 virtual machines.

Which database would meet the minimal requirements needed for this task?

- A. vFabric Postgres
- B. Microsoft SQL Express 2008
- C. Microsoft SQL Server 2014
- D. Oracle 11g

**Correct Answer:** C

**Section:** (none)

**Explanation**

**Explanation/Reference:**

Explanation:

For 40 ESXi 6.x hosts and 150 virtual machines, you can install Microsoft SQL server 2014 because it can handle the amount of data required for that many hosts and virtual machines.

Reference: [https://www.vmware.com/files/pdf/solutions/SQL\\_Server\\_on\\_VMware-Best\\_Practices\\_Guide.pdf](https://www.vmware.com/files/pdf/solutions/SQL_Server_on_VMware-Best_Practices_Guide.pdf)

### QUESTION 8

You are editing the management network configuration of an ESXi 6.x Host from the vSphere Web Client. You mistakenly put the incorrect VLAN in place for the management network.

What action do you need to take to correct this?

- A. You need to manually edit the configuration on the host with command line utilities.
- B. No action is required. By default ESXi rolls back configuration changes that disconnect the host.
- C. The ESXi host system configuration will need to be restored to the factory configuration to fix the issue.



D. The change can be reverted in the vSphere Web Client by simply editing the switch again.

**Correct Answer:** B

**Section:** (none)

**Explanation**

**Explanation/Reference:**

Explanation:

Host networking rollbacks occur when an invalid change is made to the host networking configuration. Every network change that disconnects a host also triggers a rollback.

Reference: [https://kb.vmware.com/selfservice/microsites/search.do?language=en\\_US&cmd=displayKC&externalId=2032908](https://kb.vmware.com/selfservice/microsites/search.do?language=en_US&cmd=displayKC&externalId=2032908)

### QUESTION 9

You have just installed an ESXi 6.x Host. As part of your company security regulations, a security banner must be presented on the console of the host.



<https://vceplus.com/> How can this

action be accomplished?

- A. Configure the Advanced Settings > Annotations screen of the ESXi host.
- B. This is configured from the Direct Console User Interface configuration menu.
- C. It is not possible to configure a security banner for the ESXi host.
- D. From vCenter Server, this setting is configured globally in the vCenter Server configuration.

**Correct Answer:** A

**Section:** (none)

**Explanation**

**Explanation/Reference:**

Explanation:

For security banner, configure Advanced settings and go to Annotations screen of the ESXi host.

Reference: [https://kb.vmware.com/selfservice/microsites/search.do?language=en\\_US&cmd=displayKC&externalId=2046347](https://kb.vmware.com/selfservice/microsites/search.do?language=en_US&cmd=displayKC&externalId=2046347)

#### QUESTION 10

An administrator is performing an interactive installation of ESXi 6.x.

Which three options are available for installation? (Choose three.)

- A. DVD
- B. USB
- C. PXE
- D. Scripted
- E. Auto Deploy

**Correct Answer:** ABC

**Section:** (none)

**Explanation**

**Explanation/Reference:**

Explanation:

You can install ESXi 6.x using DVD drive, USB flash drive or PXE.

Reference: [https://kb.vmware.com/selfservice/microsites/search.do?language=en\\_US&cmd=displayKC&externalId=2109708](https://kb.vmware.com/selfservice/microsites/search.do?language=en_US&cmd=displayKC&externalId=2109708)

#### QUESTION 11

An administrator is performing a scripted installation of ESXi 6.x.

In which three locations does the script need to be? (Choose three.)

- A. PXE Server
- B. HTTPS
- C. FTP
- D. NFS
- E. VVOLs Datastore

**Correct Answer:** BCD

**Section:** (none)

**Explanation**

**Explanation/Reference:**

Explanation:

- The script must be created using supported commands.
- Ensure you consider all disks that are connected to the host at the time of installation to avoid inadvertently overwriting data. Disk names can vary from machine to machine, one of the settings that you may want to configure and double check in a script is the disk selection for the ESXi installation.
- The host installation script must be stored in a location that the host can access by FTP, HTTP, HTTPS, NFS, USB flash drive, or CD-ROM drive. The installation media can be mounted on the host locally, remotely, or through PXE boot.

Reference: [https://kb.vmware.com/selfservice/microsites/search.do?language=en\\_US&cmd=displayKC&externalId=2109708](https://kb.vmware.com/selfservice/microsites/search.do?language=en_US&cmd=displayKC&externalId=2109708)

### QUESTION 12

Which three items should be validated prior to installing ESXi 6.x? (Choose three.)

- A. Remote Storage has been disconnected.
- B. Installation media is available.
- C. Server hardware clock is set to UTC.
- D. Storage has been partitioned with a VMFS volume.
- E. Network cards have been setup to use Jumbo Frames.

**Correct Answer:** ABC

**Section:** (none)

**Explanation**



**Explanation/Reference:**

Explanation:

Validate remote storage is disconnected. Install media is available and server hardware clock is set to UTC.

Reference: <https://pubs.vmware.com/vsphere-60/topic/com.vmware.ICbase/PDF/vsphere-esxi-vcenter-server-60-installation-setup-guide.pdf>

### QUESTION 13

An administrator has just completed performing an interactive installation of ESXi 6.x and is booting the host.

How is the network initially configured?

- A. The network is configured by Automatic Private IP Addressing (APIPA).
- B. The network is configured based on the settings detected in DNS.
- C. The network is configured with the address as specified in the installer.
- D. The network is automatically configured by DHCP.

**Correct Answer:** D



**Section: (none)**

**Explanation**

**Explanation/Reference:**

Explanation:

Network is automatically configured by DHCP

Reference: <https://pubs.vmware.com/vsphere-60/topic/com.vmware.ICbase/PDF/vsphere-esxi-vcenter-server-60-installation-setup-guide.pdf>

**QUESTION 14**

An administrator has just completed installing an ESXi 6.x host, but doesn't know what address has been configured.

Where is the ESXi host IP address configured?

- A. RVC console
- B. Direct Console User Interface
- C. vSphere Web Client
- D. vSphere Client

**Correct Answer: B**

**Section: (none)**

**Explanation**



**Explanation/Reference:**

Explanation:

Access Direct Console User Interface to configure ESXi host IP address.

Reference: <http://www.virtualizationadmin.com/articles-tutorials/vmware-esx-and-vsphere-articles/installation-and-deployment/understanding-vmware-esxi-directconsole-user-interface-dcui.html>

**QUESTION 15**

An administrator has just configured the IP address on an ESXi host from the Direct Console User Interface.

How can the configuration be validated as correct without any additional tools?

- A. Add the host to vCenter Server and if it works, then all networking settings are ok.
- B. Select the Test Management Network option from the DCUI.
- C. Connect to the host with the vSphere Client and click the Test Network option.
- D. Use PowerCLI to connect to the host and initiate a network test.

**Correct Answer: B**

**Section: (none)**

**Explanation**

**Explanation/Reference:**

Explanation:

This DCUI interface offers the following:

- Configure Root password
- Configure Lockdown mode
- Configure Management network
- Restart Management Network
- Test or disable Management
- Configure Keyboard
- View Support Information
- View System Logs
- Restart Management Network
- Reset System Configuration
- Remove Custom Extensions
- Shutdown or Restart /Reboot the ESXi Server

Reference: <http://www.virtualizationadmin.com/articles-tutorials/vmware-esx-and-vsphere-articles/installation-and-deployment/understanding-vmware-esxi-directconsole-user-interface-dcui.html>

#### **QUESTION 16**

An administrator has recently installed a new ESXi 6.x Host, and during the configuration notices sporadic network problems. To check whether the issue occurred sometime during the configuration, the administrator would like to reset the system.

How can this be accomplished in the shortest amount of time?

- A. Run the ESXi installer again and reinstall the host.
- B. Select the Reset System Configuration option from the vSphere Client when connected directly to the host.
- C. From the Direct Console User Interface, select Reset System Configuration.
- D. Use a host profile to reset the configuration to a default state.

**Correct Answer: C**

**Section: (none)**

**Explanation**

**Explanation/Reference:**

Explanation:

This DCUI interface offers the following:

- Configure Root password
- Configure Lockdown mode
- Configure Management network
- Restart Management Network
- Test or disable Management
- Configure Keyboard
- View Support Information
- View System Logs
- Restart Management Network ▪

Reset System Configuration

- Remove Custom Extensions
- Shutdown or Restart /Reboot the ESXi Server

Reference: <http://www.virtualizationadmin.com/articles-tutorials/vmware-esx-and-vsphere-articles/installation-and-deployment/understanding-vmware-esxi-directconsole-user-interface-dcui.html>

#### QUESTION 17

An administrator is given a bash script that retrieves data for ESXi 6.x host configurations. This data needs to be collected right after the installation of a host and must be run directly on the host.

Which two actions can be used to run this script on an ESXi host? (Choose two.)

- A. Connect to the host with Ruby vSphere Console and run the script from there.
- B. Enable SSH access from the Direct Console User Interface.
- C. Enable the ESXi Shell from the Direct Console User Interface.
- D. Run the script directly from the vSphere Web Client.

**Correct Answer:** BC

**Section:** (none)

**Explanation**

**Explanation/Reference:**

Explanation:

The Direct Console User Interface (DCUI) allows you to interact with the host locally using text-based menus. You can use the Direct Console User Interface to enable local and remote access to the ESXi Shell.

Reference: [https://pubs.vmware.com/vsphere-50/index.jsp?topic=%2Fcom.vmware.vsphere.security.doc\\_50%2FGUID-94F0C54F-05E3-4E16-80270280B9ED1009.html](https://pubs.vmware.com/vsphere-50/index.jsp?topic=%2Fcom.vmware.vsphere.security.doc_50%2FGUID-94F0C54F-05E3-4E16-80270280B9ED1009.html)

#### QUESTION 18

What is the default load balancing policy for a newly created VMkernel port on a vSphere Distributed Switch?

- A. Route based on originating virtual port ID
- B. Route based on IP Hash
- C. Route based on source mac address
- D. Route based on physical NIC load

**Correct Answer:** A

**Section:** (none)

**Explanation**

**Explanation/Reference:**

Explanation:

The default load balancing policy is route based on originating virtual port ID.

Reference: <https://pubs.vmware.com/vsphere-60/topic/com.vmware.ICbase/PDF/vsphere-esxi-vcenter-server-60-networking-guide.pdf> (page 47)

#### QUESTION 19

How are ports scaled on vSphere Standard Switches (vSS)?



<https://vceplus.com/>

- A. Ports on a vSS can be dynamically scaled up and down.
- B. Ports on a vSS can only be statically scaled up or down.
- C. Ports on a vSS can only be dynamically scaled down.
- D. Ports on a vSS can only be dynamically scaled up.

**Correct Answer:** A

**Section:** (none)

**Explanation**

**Explanation/Reference:**

Explanation:

To ensure efficient use of host resources on hosts running ESXi 5.5 and later, the number of ports of standard switches are dynamically scaled up and down. A standard switch on such a host can expand up to the maximum number of ports supported on the host.

Reference: <https://pubs.vmware.com/vsphere-60/index.jsp?topic=%2Fcom.vmware.vsphere.networking.doc%2FGUID-350344DE-483A-42ED-B0E2C811EE927D59.html>

### QUESTION 20

Which three connection types are available when configuring a vSwitch in the vSphere Web Client? (Choose three.)

- A. VMkernel Network Adapter
- B. Physical Network Adapter
- C. Virtual Machine Port Group for a Standard Switch
- D. vMotion Network Adapter
- E. vSAN Network Adapter



**Correct Answer:** ABC

**Section:** (none)

**Explanation**

**Explanation/Reference:**

Explanation:

Vmkernel network adapter, physical network adapter and virtual machine port group for standard switch are the connection types available when configuring Switch in vSphere client.

Reference: <https://pubs.vmware.com/vsphere-55/topic/com.vmware.ICbase/PDF/vsphere-esxi-vcenter-server-55-networking-guide.pdf>

### QUESTION 21

An administrator is configuring the Failover Order option on a vSphere Distributed Switch.

Which two options should be used with IP-hash load balancing? (Choose two.)

- A. Active Uplinks
- B. Standby Uplinks
- C. Unused Uplinks

D. Override Failover Order

**Correct Answer:** AC

**Section:** (none)

**Explanation**

**Explanation/Reference:**

Explanation:

Active Uplinks, and Unused adapter Uplinks are used with IP hash load balancing.

Reference: <https://books.google.com.pk/books?id=35TE4cSycNAC&pg=PA201&lpg=PA201&dq=IP+hash+load+balancing+active+uplinks+unused+uplinks&source=bl&ots=ggg8VOCpw4&sig=EaqvN49-p2UWQ5b6V53SkFFmJhc&hl=en&sa=X&ved=0ahUKEwiv1ruEhMbNAhVGL48KHfXaBN4Q6AEIUzAJ#v=onepage&q=IP%20hash%20load%20balancing%20active%20uplinks%20unused%20uplinks&f=false>

#### **QUESTION 22**

An administrator is creating a new vSphere Distributed Switch that will be utilized with a specific vSphere Cluster. The cluster itself contains a mix of ESXi 5.x and 6.x Hosts.

Which Distributed Switch version should be created to support this configuration?

- A. Distributed Switch: 6.0.0
- B. Distributed Switch: 5.0.0
- C. Distributed Switch: 5.1.0
- D. Distributed Switch: 5.5.0

**Correct Answer:** B

**Section:** (none)

**Explanation**

**Explanation/Reference:**

Explanation:

Option	Description
vSphere Distributed Switch Version: 4.0	Compatible with ESX/ESXi version 4.0 and later. Features released with later vSphere distributed switch versions are not supported.
vSphere Distributed Switch Version: 4.1.0	Compatible with ESX/ESXi version 4.1 and later. Features released with later vSphere distributed switch versions are not supported.
vSphere Distributed Switch Version: 5.0.0	Compatible with ESXi version 5.0 and later. Features released with later vSphere distributed switch versions are not supported.
vSphere Distributed Switch Version: 5.1.0	Compatible with ESXi version 5.1 and later.

Reference: <https://pubs.vmware.com/vsphere-51/index.jsp?topic=%2Fcom.vmware.vsphere.networking.doc%2FGUID-09176C71-1748-460B-BB7B3671AB855D7E.html>

#### QUESTION 23

During a new vSphere Distributed Switch configuration, where does the Maximum Transmission Unit (MTU) value get modified?

- A. Uplink Settings
- B. Switch Settings
- C. Portgroup Settings
- D. NIC Teaming Settings



**Correct Answer:** B

**Section:** (none)

**Explanation**

**Explanation/Reference:**

Explanation:

You can modify MTU values in switch settings.

Reference: [https://kb.vmware.com/selfservice/microsites/search.do%3Flanguage%3Den\\_US%26cmd%3DdisplayKC%26externalId%3D1010557](https://kb.vmware.com/selfservice/microsites/search.do%3Flanguage%3Den_US%26cmd%3DdisplayKC%26externalId%3D1010557)

#### QUESTION 24

Which two actions are prerequisites to adding ESXi 6.x hosts to a vSphere Distributed Switch? (Choose two.)

- A. Verify that there is at least one Distributed Port Group on the Distributed Switch.
- B. Verify that the Distributed Port Group have active uplinks configured in its teaming and failover policy.

- C. Verify that the Distributed Switch has been configured with a Network Profile.
- D. Verify that Network I/O control for Management Traffic is configured for the highest share value.

**Correct Answer:** AB

**Section:** (none)

**Explanation**

**Explanation/Reference:**

Explanation:

To manage the networking of your vSphere environment by using a vSphere Distributed Switch, you must associate hosts with the switch. You connect the physical NICs, VMkernel adapters, and virtual machine network adapters of the hosts to the distributed switch.

**Prerequisites**

- Verify that enough uplinks are available on the distributed switch to assign to the physical NICs that you want to connect to the switch. ▪
- Verify that there is at least one distributed port group on the distributed switch.
- Verify that the distributed port group have active uplinks configured in its teaming and failover policy.

Reference: <https://pubs.vmware.com/vsphere-60/index.jsp?topic=%2Fcom.vmware.vsphere.networking.doc%2FGUID-E90C1B0D-82CB-4A3D-BE1B0FDCD6575725.html>

**QUESTION 25**

Which load balancing policy, previously limited to vSphere Distributed Switches, is now available on vSphere Standard Switches with vSphere 6.x?

- A. Route based on physical NIC workload
- B. Route based on IP Hash
- C. Route based on the originating virtual port
- D. Route based on Source MAC Hash

**Correct Answer:** A

**Section:** (none)

**Explanation**

**Explanation/Reference:**

Explanation:

Route based on physical NIC workload was limited to vSphere Distributed switches. Now its available on vSphere standard switches with vSphere 6.x

Reference: <https://pubs.vmware.com/vsphere-60/topic/com.vmware.ICbase/PDF/vsphere-esxi-vcenter-server-60-networking-guide.pdf>

**QUESTION 26**

Which three VLAN Tagging modes are available in vSphere 6.x? (Choose three.)



- A. External Switch Tagging
- B. Private VLAN Tagging
- C. Virtual Switch Tagging
- D. VXLAN Tagging
- E. Virtual Guest Tagging

**Correct Answer:** ACE

**Section:** (none)

**Explanation**

**Explanation/Reference:**

Explanation:

There are 3 types of tagging available in vSphere.

- 1.Virtual Switch Tagging (VST)
- 2.External Switch Tagging (EST)
- 3.Virtual Guest Tagging (VGT)

VLAN tagging is determined by the VLAN value specified at the port group and it tells the vSwitch or Physical switch or Virtual machines to how to handle the VLAN tagging.

Reference: <http://www.vmwarearena.com/vlan-tagging-vst-est-vgt-on-vmware/>

#### **QUESTION 27**

Which two Fibre Channel zoning options are supported with vSphere 6.x? (Choose two.)

- A. Single-Initiator
- B. Single-Initiator-Single-Target
- C. Multiple-Initiators-Single-Target
- D. Multiple-Initiators-Multiple-Targets

**Correct Answer:** AB

**Section:** (none)

**Explanation**

**Explanation/Reference:**

Explanation:

Use single-initiator-single-target zoning when zoning ESXi hosts to Fibre Channel arrays. With this type of configuration, fabric related events that occur on one array do not impact other arrays

Reference: <https://pubs.vmware.com/vsphere-60/topic/com.vmware.ICbase/PDF/vsphere-esxi-vcenter-server-60-storage-guide.pdf>

### QUESTION 28

What is true regarding datastores on ESXi 6.x?

- A. NFS 4.1 datastore does not support Fault Tolerance (FT)
- B. Both VMFS3 and VMFS5 datastores can be created
- C. NFS datastore can be mounted using NFS 4.1 on one ESXi host and NFS 3.0 on another
- D. NFS 3.0 datastore does not support Fault Tolerance (FT)

**Correct Answer:** A

**Section:** (none)

**Explanation**

**Explanation/Reference:**

Explanation:

VMs on NFS v4.1 support FT, as long as it is the new FT mechanism introduced in 6.0.

VMs running on NFS v4.1 do not support the old, legacy FT mechanism.

In vSphere 6.0, the newer Fault Tolerance mechanism can accommodate symmetric multiprocessor (SMP) virtual machines with up to four vCPUs. Earlier versions of vSphere used a different technology for Fault Tolerance (now known as legacy FT), with different requirements and characteristics (including a limitation of single vCPUs for legacy FT VMs).

Reference: <http://vsphere-land.com/news/nfs-4-1-support-in-vsphere-limitations-and-caveats.html>

### QUESTION 29

Which type of Adapter does not require vmkernel networking?

- A. Independent Hardware iSCSI Adapter
- B. Dependent Hardware iSCSI Adapter
- C. Software iSCSI Adapter
- D. Software FCoE Adapter

**Correct Answer:** A

**Section:** (none)

**Explanation**

**Explanation/Reference:**

Explanation:

Independent Hardware iSCSI adapter does not require vmkernel networking.

Reference: <https://pubs.vmware.com/vsphere-55/index.jsp?topic=%2Fcom.vmware.vsphere.storage.doc%2FGUID-C476065E-C02F-47FA-A5F73B3F2FD40EA8.html>

### QUESTION 30

A company has decided to implement Virtual SAN within their vSphere 6.x environment. The Virtual SAN cluster will be composed of three ESXi 6.x hosts that are on the Virtual SAN Ready Node list.

Each ESXi host includes:

- Two SAS Controllers that support Passthrough Mode
- Four Solid State Drives (SSDs) 1TB in size each
- 20 SAS Magnetic Disks (MDs) 1TB in size each
- The SSDs and MDs are evenly split between the two SAS controllers

The company will pilot a Virtual SAN cluster utilizing VMware best practices while maximizing storage capacity. The Virtual SAN cluster will use Manual Mode.

Which two Disk Group configurations would meet the stated configuration requirements? (Choose two.)

- A. 4 disk groups with 1 SSD and 5 MDs each
- B. 2 disk groups with 1 SSD and 7 MDs each
- C. 2 disk groups with 2 SSDs and 7 MDs each
- D. 2 disk groups with 1 SSD and 10 MDs each



**Correct Answer:** AB

**Section:** (none)

**Explanation**

**Explanation/Reference:**

Explanation:

4 disk groups with 1 SSD and 5 Mds each and 2 disk groups with 1 SSD and 7 Mds each can meet the configuration requirements in the scenario.

Reference: <https://pubs.vmware.com/vsphere-60/topic/com.vmware.ICbase/PDF/virtual-san-60-administration-guide.pdf>

### QUESTION 31

An administrator is creating a new Virtual SAN cluster on a Layer 2 network. There is an existing Virtual SAN cluster on the same Layer 2 network.

Which two actions would allow the new Virtual SAN cluster to coexist with the previously created cluster? (Choose two.)

- A. Change the default Multicast Address on the new Virtual SAN cluster.
- B. Change the default Unicast Address on the new Virtual SAN Cluster.
- C. Create a separate VLAN for each cluster.
- D. Create an ARP Alias for the Virtual SAN VMkernel Network Adapter.

**Correct Answer:** AB

**Section:** (none)

**Explanation**

**Explanation/Reference:**

Explanation:

To configure virtual san cluster to coexist with older cluster, you need to change the default multicast address on the netw virtual san cluster and change the default unicast address on the new virtual san cluster.

Reference: <https://pubs.vmware.com/vsphere-55/index.jsp?topic=%2Fcom.vmware.vsphere.storage.doc%2FGUID-5656EA30-F7C7-494C-A356E1471942625A.html>

### QUESTION 32

Which two Virtual SAN related actions might start resynchronization of virtual machine objects? (Choose two.)

- A. Editing a virtual machine storage policy to increase the number of replicas.
- B. Editing a virtual machine storage policy to reduce the number of replicas.
- C. Editing a virtual machine storage policy to increase the number of disk stripes.
- D. Editing a virtual machine storage policy to reduce the number of disk stripes.

**Correct Answer:** AC

**Section:** (none)

**Explanation**

**Explanation/Reference:**

Explanation:

Editing a virtual machine storage policy to increase the number of replicas and the number of disk stripes with start resync of virtual machine objects.

Reference: <https://www.vmware.com/support/vsphere6/doc/vmware-virtual-san-60-release-notes.html>

### QUESTION 33

What condition would prevent an administrator from creating a new VMFS3 datastore on an ESXi 6.x host using the vSphere Web Client?

- A. A VMFS3 datastore cannot be created on an ESXi 6.x host.
- B. The VMFS3 kernel module is not loaded.

- C. A VMFS3 datastore cannot be mounted on an ESXi 6.x host.
- D. VMFS3 datastores are not compatible with virtual machines created on an ESXi 6.x host.

**Correct Answer:** A

**Section:** (none)

**Explanation**

**Explanation/Reference:**

Explanation:

VMFS3 datastore is not support on ESXi 6.x host.

Reference: <https://pubs.vmware.com/vsphere-60/index.jsp?topic=%2Fcom.vmware.vsphere.storage.doc%2FGUID-5EE84941-366D-4D37-8B7B767D08928888.html>

#### QUESTION 34

Which two statements are true about VMFS5 datastores on ESXi 6.x? (Choose two.)

- A. Virtual Disk (VMDK) size can be larger than 2TB.
- B. Datastore extent size can be larger than 2TB.
- C. Only Physical Mode Raw Device Map (Passthrough-RDM) can be larger than 2TB.
- D. 2MB block size is required to support larger than 2TB file size.

**Correct Answer:** AB

**Section:** (none)

**Explanation**

**Explanation/Reference:**

Explanation:

The maximum supported size of a virtual mode Raw Device Mapping (vRDM) has also been increased from 2 TB to 62 TB.

A VMDK larger than 2 TB can be created on a virtual machine that is powered on or off, but extending a VMDK beyond 2 TB is only supported when the virtual machine is powered off.

Reference: [https://kb.vmware.com/selfservice/microsites/search.do?language=en\\_US&cmd=displayKC&externalId=2058287](https://kb.vmware.com/selfservice/microsites/search.do?language=en_US&cmd=displayKC&externalId=2058287)

#### QUESTION 35

Which three conditions would prevent Storage I/O Control from being enabled on a group of datastores? (Choose three.)

- A. The datastores planned for the solution are used by different vSphere clusters.
- B. A datastore planned for the solution is configured as a Raw Device Mapping file.
- C. A datastore planned for the solution has three extents.

- D. A datastore planned for the solution is configured as NFS.
- E. The organization has an Enterprise license.

**Correct Answer:** BCE

**Section:** (none)

**Explanation**

**Explanation/Reference:**

Explanation:

Datastore planned for solution is configured as RDM file. When the datastore has three extents and the organization has an enterprise license, storage I/O control will not be enabled on a group of datastores.

Reference: [https://kb.vmware.com/selfservice/microsites/search.do?language=en\\_US&cmd=displayKC&externalId=1022091](https://kb.vmware.com/selfservice/microsites/search.do?language=en_US&cmd=displayKC&externalId=1022091)

### QUESTION 36

When is it possible to place a VMFS5 datastore in maintenance mode?

- A. When it is a member of a Storage DRS cluster
- B. When it is a member of Virtual SAN cluster
- C. When it is a member of a multi-extent datastore
- D. When it is a member of a Virtual Volume



**Correct Answer:** A

**Section:** (none)

**Explanation**

**Explanation/Reference:**

Explanation:

Storage DRS introduced the feature Datastore Maintenance mode and this new feature can be compared to Host Maintenance Mode. When a datastore is placed in Maintenance Mode all registered virtual machines on that datastore, are migrated to the other datastores in the datastore cluster. Datastore maintenance mode can be used to safely migrate virtual machines out of the datastore for storage array related maintenance operations such as migrating a LUN to another RAID group, however it is also an excellent feature that can help you during a storage migration project migrating virtual machines from standalone VMFS3 datastores to VMFS5 datastores aggregated in a Storage DRS datastore cluster.

Reference: <https://blogs.vmware.com/vsphere/2012/04/using-datastore-maintenance-mode-for-migration-virtual-machines-to-datastore-clusters.html>

### QUESTION 37

From which two locations in the inventory hierarchy can you deploy a virtual machine using a template? (Choose two.)

- A. Directly from the template.
- B. From a compute resource.
- C. From an existing virtual machine.
- D. From a Datastore.

**Correct Answer:** AB

**Section:** (none)

**Explanation**

**Explanation/Reference:**

Explanation:

You can deploy a virtual machine directly from the template. A compute resource can also be used for deploying a VM.

Reference: <https://pubs.vmware.com/vsphere-60/topic/com.vmware.ICbase/PDF/vsphere-esxi-vcenter-server-60-virtual-machine-admin-guide.pdf>

### QUESTION 38

An administrator is deploying multiple Windows 2003 Virtual Machines from the same template.

What two steps should be taken to avoid network conflicts? (Choose two.)

- A. Customize the guest operating system.
- B. Install VMware Tools into the new virtual machines.
- C. Copy the Microsoft Sysprep tools onto the vCenter Server system.
- D. Ensure the e1000 vmnic is selected for each new virtual machine.

**Correct Answer:** AC

**Section:** (none)

**Explanation**

**Explanation/Reference:**

Explanation:

To avoid such network or software conflicts, its recommended to customize the VM Guest during the deployment process. For Guest OS customization of virtual machines deployed from templates, vCenter requires the following:

- If the guest OS is Windows, you need VMware Tools and Sysprep utils to be installed within the templates:
- You will need to copy Sysprep tools to vCenter for Windows 2000, XP & 2003. Starting with Windows Vista onward, Sysprep tools are part of the base OS install.

Reference: <https://virtual-drive.in/2015/02/08/what-are-virtual-machine-templates/>

**QUESTION 39**

An administrator needs to add an object to an existing vApp using the vSphere Web Client. How is this accomplished?

- A. Create an Object Inside the vApp.
- B. Add an Object to a vApp.
- C. Add an Object to the Datastore the vApp is located in.
- D. Move all Objects to a new Datastore folder.

**Correct Answer:** AB

**Section:** (none)

**Explanation**

**Explanation/Reference:**

Explanation:

to add an object to an existing vApp using the vsphere web client, create an object inside vApp or you can add an object to a vApp.

Reference: [https://pubs.vmware.com/vsphere-50/index.jsp?topic=%2Fcom.vmware.vsphere.vm\\_admin.doc\\_50%2FGUID-12FDA1A4-6214-463B-8D73FE25454C642E.html](https://pubs.vmware.com/vsphere-50/index.jsp?topic=%2Fcom.vmware.vsphere.vm_admin.doc_50%2FGUID-12FDA1A4-6214-463B-8D73FE25454C642E.html)

**QUESTION 40**

A virtual machine template is accidentally removed from the vCenter Server Inventory.

Which method would be used to recover the template back into the environment?

- A. Use the datastore browser to locate the template, then right click and add the .vmtx file to inventory.
- B. Use the datastore browser to locate the template, then right click and add the .vmx file to inventory.
- C. Using the Managed Object Browser and adding the template from the ManagedObjectReference:GuestFileManager object.
- D. Using the Managed Object Browser and adding the template from the ManagedObjectReference:VirtualDiskManager object.

**Correct Answer:** A

**Section:** (none)

**Explanation**

**Explanation/Reference:**

Explanation:

Templates are associated with hosts, and the only way to regain or register templates after removing and adding a host is to use the datastore browser to locate the template. Then use the inventory wizard to name and register the .vmtx file as a template back into vCenter Server.

Reference: [https://pubs.vmware.com/vsphere-4-esx-vcenter/index.jsp?topic=/com.vmware.vsphere.bsa.doc\\_40/vc\\_admin\\_guide/working\\_with\\_templates\\_and\\_clones/t\\_regain\\_templates.html](https://pubs.vmware.com/vsphere-4-esx-vcenter/index.jsp?topic=/com.vmware.vsphere.bsa.doc_40/vc_admin_guide/working_with_templates_and_clones/t_regain_templates.html)



**QUESTION 41**

A vApp named Sales has a Memory Limit of 32 GB and a CPU Limit of 12,000 MHz. There are three virtual machines within the vApp: ▪ Sales-DB -- Has a memory reservation of 20 GB.

- Sales-DC -- Has a memory reservation of 8 GB.
- Sales-Web -- Has a memory reservation of 8 GB.

Which statement is correct?

- A. All three virtual machines can power on, but will have memory contention.
- B. All three virtual machines can power on without memory contention.
- C. Only two of the three virtual machines can power on.
- D. Only one of the virtual machines can power on.

**Correct Answer:** C

**Section:** (none)

**Explanation**

**Explanation/Reference:**

Explanation:

As per the scenario, only two of the three virtual machines can power on.

**QUESTION 42**

An administrator is virtualizing a physical application server and adding it to an existing multi-tiered vApp. The application license is currently tied to the physical NIC's MAC address, so the administrator needs to ensure the license will function properly in the virtual machine.

Which two actions can the administrator take to satisfy this task? (Choose two.)

- A. Set the MAC address for the vNIC in the guest operating system.
- B. Install the physical server's NIC into the ESXi host.
- C. Configure the MAC address for the vNIC using the vSphere Web Client.
- D. Assign the physical server NIC's MAC address in the vSphere Distributed Switch.

**Correct Answer:** AB

**Section:** (none)

**Explanation**

**Explanation/Reference:**

Explanation:

First set the MAC address for the vNIC in the guest operating system and install the physical server's NIC into the ESXi host.

Reference: <http://rickardandersson.com/manual-mac-address-for-a-vmware-guest>

#### QUESTION 43

A virtual machine has been renamed and an administrator is unable to find files with the new virtual machine name in the datastore.

What is the reason for this?

- A. The names of the files on the datastore do not change.
- B. The names of the files on the datastore have been corrupted.
- C. The virtual machine needs to be re-added to the inventory.
- D. The Distributed Resource Scheduler moved the virtual machine to another host.

**Correct Answer:** A

**Section:** (none)

**Explanation**

**Explanation/Reference:**

Explanation:

The reason is that the names of the files on the datastore do not change that is why admin is unable to find files with new virtual machines name in the datastore.

Reference: [https://kb.vmware.com/selfservice/microsites/search.do?language=en\\_US&cmd=displayKC&externalId=1029513](https://kb.vmware.com/selfservice/microsites/search.do?language=en_US&cmd=displayKC&externalId=1029513)

#### QUESTION 44

Which two options would allow a database administrator, with no access to the vSphere infrastructure, to connect to a virtual machine? (Choose two.)



<https://vceplus.com/>

- A. Use the Virtual Machine Remote Console (VMRC).
- B. Use Remote Desktop Protocol (RDP) to connect.
- C. Ask the administrator to grant permission to access the console through vCenter Server.

D. Ask the administrator to grant permission to access with the Horizon View Direct Connect Client.

**Correct Answer:** BC

**Section:** (none)

**Explanation**

**Explanation/Reference:**

Explanation:

Accessing a virtual machine with no access to vSphere environment is tricky. You can use virtual machine remote console to remotely access the VM by asking the admin to grant permission to access the console through vcenter server.

Reference: <http://blog.mwpreston.net/2011/11/25/access-to-vm-console-without-vi-client/>

#### QUESTION 45

An administrator wants to deploy a vApp and dynamically assign IP addresses without a DHCP server on the network.

Which action would you take to accomplish this task?

- A. Enable IP pools.
- B. Configure a local DHCP server in the vApp.
- C. Enable NAT on the vApp router.
- D. Configure the guest OS for workgroup and WINS.



**Correct Answer:** A

**Section:** (none)

**Explanation**

**Explanation/Reference:**

Explanation:

IP pools were first introduced with vSphere 4, but they're not necessarily used by everyone. IP pools are necessary if you want create or deploy a vApp. They provide a network identity to vApps. IP pool gives a network config to VMs that run in the vApp. So you'll also need to have an IP pool configured if you want to test vCloud Automation Center (VCAC) or Horizon Workspace.

When you configure an IP Pool you specify a range of either IPv4 or IPv6 addresses, DNS and proxy settings, and select which vSwitch port groups that the pool will be available to. Usually you'll want to do a static IP for server VMs, but you might want to have a test VLAN for developments and you need DHCP there.

Reference: <http://www.vladan.fr/configuring-ip-pools/>

#### QUESTION 46

A vApp template recently added to a Content Library is not displayed.

Which two actions could correct this problem? (Choose two.)

- A. Manually synchronize the library
- B. Select the Download all library content immediately option
- C. Select the Sync subscribed library option
- D. Manually download the vApp template

**Correct Answer:** AB

**Section:** (none)

**Explanation**

**Explanation/Reference:**

Explanation:

If the vApp template is not displayed in the content library, select the download all library content immediately option and manually synchronize the library.

Reference: [https://pubs.vmware.com/vsphere-60/index.jsp?topic=%2Fcom.vmware.vsphere.vm\\_admin.doc%2FGUID-F7BF0E6B-7C4F-4E46-8BBF-76229AEA7220.html](https://pubs.vmware.com/vsphere-60/index.jsp?topic=%2Fcom.vmware.vsphere.vm_admin.doc%2FGUID-F7BF0E6B-7C4F-4E46-8BBF-76229AEA7220.html)

#### QUESTION 47

When you add an ESXi 6.x host to a new Cluster, which vSphere object owns the CPU and Memory resources of the hosts?

- A. vCenter Server
- B. Datacenter
- C. Cluster
- D. Host

**Correct Answer:** C

**Section:** (none)

**Explanation**

**Explanation/Reference:**

Explanation:

Cluster owns the CPU and memory resources of the hosts when you add an ESXi 6.x host to a new cluster.

Reference: <https://pubs.vmware.com/vsphere-60/topic/com.vmware.ICbase/PDF/vsphere-esxi-vcenter-server-60-resource-management-guide.pdf>

#### QUESTION 48

An administrator creates a DRS cluster of eight ESXi 6.x hosts. There are 10 virtual machines balanced across the hosts. An attempt to place the first host into maintenance mode fails.

What are two reasons that the host failed to enter maintenance mode? (Choose two.)

- A. The DRS cluster Automation Level is set to Partially Automated mode.
- B. One of the virtual machines on the ESXi Host entering maintenance mode is configured with a DRS Host affinity rule Should run on hosts in group.
- C. One of the virtual machines on the ESXi Host entering maintenance mode is configured with a DRS Host affinity rule Must run on hosts in group.
- D. One of the virtual machines on the ESXi Host entering maintenance mode is configured with an individual Automation Level set to Partially Automated.

**Correct Answer:** AD

**Section:** (none)

**Explanation**

**Explanation/Reference:**

Explanation:

When considering an automation level, it is usually best to choose Fully Automated and let DRS handle everything. However, when first enabling DRS, you might want to set the automation level to Manual or Partially Automated so that you can observe its recommendations for a while before turning it loose on Fully Automated. Even when selecting Fully Automated, you can still configure individual VM automation levels, so you can specify certain VMs to not be migrated at all (disabled) or to be set to Manual or Partially Automated. To configure individual VM automation levels, click on Virtual Machine Options, located under DRS. Usually, the default three-star level is a good starting point and works well for most environments. You should be careful when choosing more aggressive levels, as you could have VMs moving very frequently between hosts (i.e., VM pong), which can create performance issues because of the constant VMotions which cause an entire LUN to be locked during the operation (i.e., SCSI reservations).

Reference: <http://cdn.ttgtmedia.com/searchSystemsChannel/downloads/AdvancedvSpherefeatures.pdf>

#### **QUESTION 49**

What are three goals of resource management within a cluster? (Choose three.)

- A. To prevent virtual machines from monopolizing resources and to guarantee predictable service rates.
- B. To exploit undercommitted resources and overcommit with graceful degradation.
- C. To provide solutions to potential problems that you might encounter when using vCenter Server.
- D. To control the relative importance of virtual machines and provide flexible dynamic partitioning.
- E. To provide additional network administration capabilities.

**Correct Answer:** ABD

**Section:** (none)

**Explanation**

**Explanation/Reference:**

Explanation:

When managing your resources, you should be aware of what your goals are.

In addition to resolving resource overcommitment, resource management can help you accomplish the following:

- Performance Isolation—prevent virtual machines from monopolizing resources and guarantee predictable service rates.
- Efficient Utilization—exploit undercommitted resources and overcommit with graceful degradation.
- Easy Administration—control the relative importance of virtual machines, provide flexible dynamic partitioning, and meet absolute service-level agreements.

Reference: <https://pubs.vmware.com/vsphere-60/topic/com.vmware.ICbase/PDF/vsphere-esxi-vcenter-server-60-resource-management-guide.pdf>

#### QUESTION 50

Which three features can be enabled for a new host cluster? (Choose three.)

- A. Storage Distributed Resource Scheduling
- B. High Availability
- C. Fault Tolerance
- D. Distributed Resource Scheduling
- E. Virtual SAN

**Correct Answer:** BDE

**Section:** (none)

**Explanation**

**Explanation/Reference:**

Explanation:

On a new host cluster, high availability, distributed resource scheduling and virtual SAN can be enabled.

Reference: <https://pubs.vmware.com/vsphere-55/topic/com.vmware.vsphere.storage.doc/GUID-D68890D8-841A-4BD1-ACA1-DA3D25B6A37A.html>

#### QUESTION 51

A High Availability (HA) cluster is configured to respond to a given number of host failures. The cluster contains virtual machines configured with these settings: ▪

VM1 has a 1GHz CPU reservation and no Memory reservation

▪ VM2 has a 2GHz CPU reservation and no Memory reservation ▪

VM3 has no CPU reservation and no Memory reservation

Given this information, what is the correct slot size for the cluster?

- A. The CPU Reservation should be set to 32MHz and the memory reservation should be set to 32MB plus memory overhead.
- B. The CPU reservation should be set to 1 GHz and the memory reservation should be set to 0MB plus memory overhead.
- C. The CPU reservation should be set to 2 GHz, and the memory reservation should be set to 0MB plus the virtual machine memory overhead.
- D. The CPU reservation should be set to 2 GHz, and the memory reservation should be set to 32MB, plus the virtual machine memory overhead.

**Correct Answer:** C

**Section: (none)**

**Explanation**

**Explanation/Reference:**

Explanation:

Then HA will calculate how much resources are currently reserved for both memory and CPU for powered-on virtual machines. For CPU, those virtual machines that do not have a reservation larger than 32Mhz a default of 32Mhz will be used. For memory a default of 0MB+memory overhead will be used if there is no reservation set. If a reservation is set for memory it will use the reservation+memory overhead. Reference: <http://www.yellow-bricks.com/2012/06/20/ha-admission-control-basics-part-22/>

**QUESTION 52**

What is a requirement when enabling a Virtual SAN cluster in an existing High Availability (HA) and Distributed Resource Scheduler (DRS) Cluster?

- A. Disable DRS and HA before enabling Virtual SAN
- B. Enable DRS before enabling Virtual SAN
- C. Disable HA before enabling Virtual SAN
- D. Enable Storage DRS before enabling Virtual SAN

**Correct Answer: C**

**Section: (none)**

**Explanation**



**Explanation/Reference:**

Explanation:

One of the requirement is to disable HA before enabling Virtual SAN.

Reference: <https://pubs.vmware.com/vsphere-60/topic/com.vmware.ICbase/PDF/virtual-san-60-administration-guide.pdf>

**QUESTION 53**

An organization has a number of virtual machines that would benefit from Fault Tolerance. These include:

- A single vCPU Apache Server
- A dual vCPU vCenter Server
- A quad vCPU SQL Server
- An eight vCPU Hadoop Server

Which two virtual machines can be configured to use VMware Fault Tolerance? (Choose two.)

- A. Apache Server
- B. vCenter Server

- C. SQL Server
- D. Hadoop Server

**Correct Answer:** AC

**Section:** (none)

**Explanation**

**Explanation/Reference:**

Explanation:

Apache server and SQL server can be configured to use VMware fault tolerance.

Reference: [https://kb.vmware.com/selfservice/microsites/search.do?language=en\\_US&cmd=displayKC&externalId=1013428](https://kb.vmware.com/selfservice/microsites/search.do?language=en_US&cmd=displayKC&externalId=1013428)

#### QUESTION 54

Which three statements are true regarding Fault Tolerance? (Choose three.)

- A. Applications need to be continuously available to users.
- B. Applications without native clustering capabilities can be protected.
- C. Custom clustering solutions are complicated to configure and maintain.
- D. Applications that have 16 vCPUs are supported.
- E. Prevents application crashes by analyzing the workload and correcting problems.

**Correct Answer:** ABC

**Section:** (none)

**Explanation**

**Explanation/Reference:**

Explanation:

With Fault tolerance, applications need to be continuously available to users, application without native clustering capabilities can be protected and custom clustering solutions are complicated to configure and maintain.

Reference: <https://www.vmware.com/products/vsphere/features/availability>

#### QUESTION 55

What is true about resource pools created on a Distributed Resource Scheduler (DRS) cluster?

- A. A root resource pool is created with the specified values.
- B. A root resource pool is automatically created using the aggregate total of the ESXi host resources in the cluster.
- C. A root resource pool is automatically created using the aggregate total of all resources in the datacenter.
- D. A root resource pool is not needed when creating resource pools on a DRS cluster.



**Correct Answer:** B

**Section:** (none)

**Explanation**

**Explanation/Reference:**

Explanation:

A root resource pool is automatically created using the aggregate total of the ESXi host resources in the cluster.

Reference: [https://www.vmware.com/pdf/vmware\\_drs\\_wp.pdf](https://www.vmware.com/pdf/vmware_drs_wp.pdf)

### QUESTION 56

An administrator is moving a virtual machine into a resource pool. The VM and resource pool are configured as shown:

VM configuration:

- 2GHz CPU reservation
- 1GB Memory limit

Resource Pool configuration: ▪

6GHz CPU reservation

- 1GB Memory reservation
- No limit to memory



What happens to the virtual machine's resource settings when it is moved into the pool?

- A. The VM inherits the resource settings of the resource pool if expandable reservations is enabled.
- B. The VM's reservations and limits are ignored and removed.
- C. The VM keeps the 2GHz CPU reservation but receives the 1GB memory reservation.
- D. The VM keeps the 2GHz CPU reservation and the 1GB Memory limit.

**Correct Answer:** D

**Section:** (none)

**Explanation**

**Explanation/Reference:**

Explanation:

When the VM is moved into the pool, it keeps the 2 GHz CPU reservation and 1 GB memory limit.

Reference: <https://pubs.vmware.com/vsphere-60/topic/com.vmware.ICbase/PDF/vsphere-esxi-vcenter-server-60-resource-management-guide.pdf>

### QUESTION 57

An administrator is tasked with performing a vMotion migration of a virtual machine. The virtual machine is configured as follows:

- vSphere Flash Read Cache (vFRC) enabled
- Is part of a Distributed Resource Cluster (DRS) Cluster

Which two statements are true? (Choose two.)

- A. Each ESXi host in the cluster supports multiple virtual flash resources.
- B. Each ESXi host in the cluster supports one virtual flash resource.
- C. DRS treats powered-on virtual machines with Flash Read Cache as having a preferred affinity to their current host and moves them only for mandatory reasons.
- D. DRS treats powered-on virtual machines with Flash Read Cache as having a required affinity to their current host and does not move them.

**Correct Answer:** BC

**Section:** (none)

**Explanation**

**Explanation/Reference:**

Explanation:

Each ESXi host in the cluster supports one virtual flash resource. Secondly, DRS treats powered-on virtual machines with Flash Read Cache as having a preferred affinity to the current host.

Reference: <http://www.yellow-bricks.com/2013/09/11/frequently-asked-questions-vsphere-flash-read-cache/>

#### **QUESTION 58**

Which two actions are required when enabling vFlash Read Cache for a virtual machine's virtual disk? (Choose two.)

- A. A value in the Virtual Flash Read Cache text box must be entered.
- B. A Flash Resource Pool for Cache size reservation must be entered.
- C. The Device backing and the block size must be configured.
- D. The Enable virtual flash host swap cache check box must be selected.

**Correct Answer:** AD

**Section:** (none)

**Explanation**

**Explanation/Reference:**

Explanation:

To enable vFlash Read cache for VM virtual disk, enter a value in virtual flash read cache text box and enable virtual flash host swap cache check box.

Reference: <http://www.yellow-bricks.com/2013/08/26/introduction-to-vsphere-flash-read-cache-aka-vflash/>

#### **QUESTION 59**

vMotion can be performed between which three physical boundaries? (Choose three.)

- A. Between two vCenter Server Systems
- B. Between two vSphere Distributed Virtual Switches
- C. Between two vCenter Server Datacenter objects
- D. Between two VMware NSX Layer 4 segments
- E. Between two NFS datastores

**Correct Answer:** ABC

**Section:** (none)

**Explanation**

**Explanation/Reference:**

Explanation:

vMotion can be performed between two vCenter servers, two vsphere distributed virtual swiches and between two vcenter server datacenter objects.

Reference: <https://www.vmware.com/products/vsphere/features/vmotion>

#### QUESTION 60

Which three operations occur during a cold migration of a virtual machine? (Choose three.)

- A. The virtual machine disks are moved if the datastore is being changed.
- B. The virtual machine is registered with the destination server.
- C. The source virtual machine is removed from the old hosts.
- D. The virtual machine hardware is upgraded.
- E. The virtual machine files are quiesced prior to the migration.

**Correct Answer:** ABC

**Section:** (none)

**Explanation**

**Explanation/Reference:**

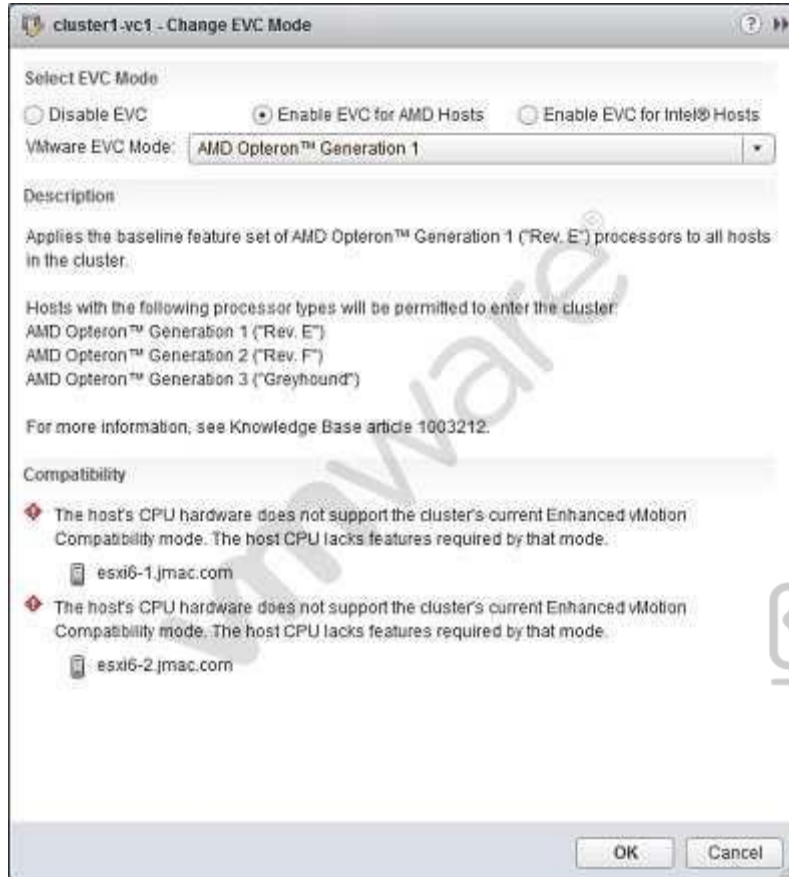
Explanation:

First, the virtual machine disks are moved if the datastore is being changed, the virtual machine is registered with the destination server and the source virtual machine is removed from the old host/s.

Reference: [https://kb.vmware.com/selfservice/microsites/search.do?language=en\\_US&cmd=displayKC&externalId=1010045](https://kb.vmware.com/selfservice/microsites/search.do?language=en_US&cmd=displayKC&externalId=1010045)

#### QUESTION 61

Refer to the Exhibit.



An administrator attempts to enable Enhanced vMotion Compatibility (EVC) on a cluster. The operation results in a compatibility error, as shown in the exhibit.

What is the likely cause of this error?

- A. The CPUs in the ESXi host are not AMD CPUs.
- B. The CPUs in the ESXi host do not support hardware virtualization capabilities.
- C. The XD/NX CPU features have not been enabled in the BIOS of the server.
- D. There is no shared storage between the hosts in the cluster.

**Correct Answer: A**

**Section: (none)**

**Explanation**

**Explanation/Reference:**

Explanation:

In general, if a processor can support EVC level XN, it can also support levels XN-1 to X0. For example, a processor that supports the Intel® "Sandy Bridge" Generation EVC Baseline has an EVC level of L4. Therefore, it can also support EVC levels L3, L2, L1, and L0. However, it cannot support EVC level L5, which corresponds to the Intel® "Ivy Bridge" Generation. Intel EVC Baselines are listed in Table 1.1.

For AMD processors, there are two different sequences of EVC levels: Levels A0 to A3, which support the first 3 generations of AMD Opteron™ processors, and levels B0 and above, which support AMD Opteron™ Generation 3 and later processors.

Note: The AMD Opteron™ Generation 3 (no 3DNow!™) EVC baseline is common to both sequences. For example, an AMD processor that supports the AMD Opteron™ Generation 4 EVC baseline supports the AMD Opteron™ Generation 3 (no 3DNow!™) baseline, but not the AMD Opteron™ Generation 3 baseline. An AMD processor that supports the AMD Opteron™ Generation 3 baseline supports the AMD Opteron™ Generation 3 (no 3DNow!™) baseline, but not the AMD Opteron™ Generation 4 baseline.

Reference: [https://kb.vmware.com/selfservice/microsites/search.do?language=en\\_US&cmd=displayKC&externalId=1003212](https://kb.vmware.com/selfservice/microsites/search.do?language=en_US&cmd=displayKC&externalId=1003212)

#### **QUESTION 62**

An administrator is attempting to migrate a large Hadoop virtual machine using vMotion. The administrator notices a delay when the machine is quiesced. The Hadoop virtual machine is processing many transactions a second to an in-memory database.

Which two actions would help reduce the amount of time needed to perform a vMotion on this virtual machine? (Choose two.)

- A. Use multiple NICs for the vMotion vmkernel port.
- B. Use a 10Gbps Network card for the vMotion vmkernel port.
- C. Add an additional management network to help transmit the data quicker.
- D. Disable Fault Tolerance before performing the vMotion.

**Correct Answer:** AB

**Section: (none)**

**Explanation**

**Explanation/Reference:**

Explanation:

Use multiple NICs for the vmotion vmkernel port and a 10 Gbps network card for vMotion vmkernel port.

Reference: <http://www.yellow-bricks.com/2011/09/17/multiple-nic-vmotion-in-vsphere-5/>

#### **QUESTION 63**

An administrator must determine an appropriate backup solution, given these conditions:

- 50 of the virtual machines are in a resource pool named Finance.
- 50 of the virtual machines are in a resource pool named QA.

Which solution allows an administrator the ability to backup 100 virtual machines?

- A. Use Snapshot Manager on the vCenter Server to backup the virtual machines.
- B. Use the VMware Consolidated Backup (vcb) tool on the ESXi Host to backup the virtual machines.
- C. Use the VMware Data Recovery (VDR) Appliance on the vCenter Server to backup the virtual machines.
- D. Use the VMware Data Protection (VDP) Appliance on one of the ESXi Hosts to backup the virtual machines.

**Correct Answer:** D

**Section:** (none)

**Explanation**

**Explanation/Reference:**

Explanation:

VDP supports these specifications:

- Each vCenter Server can support up to 10 VDP appliances.
- Each VDP appliance supports backup for up to 100 virtual machines.
- Only 1 VDP appliance can exist per ESXi/ESX host.
- Support for 0.5 TB, 1 TB, or 2 TB of deduplicated backup data.



Reference: [https://kb.vmware.com/selfservice/microsites/search.do?language=en\\_US&cmd=displayKC&externalId=2016565](https://kb.vmware.com/selfservice/microsites/search.do?language=en_US&cmd=displayKC&externalId=2016565)

#### **QUESTION 64**

A vSphere administrator needs to backup a virtual machine that has a Microsoft SQL Server Database installed.

Which solution allows for an application quiesce to occur during backup?

- A. VMware vCenter Converter
- B. VMware vCenter Site Recovery Manager
- C. VMware vSphere Replication
- D. VMware vSphere Data Protection

**Correct Answer:** D

**Section: (none)**

**Explanation**

**Explanation/Reference:**

Explanation:

VMware vSphere data protection advanced can be used for the application quiesce to occur during backup.

Reference: [https://kb.vmware.com/selfservice/microsites/search.do?language=en\\_US&cmd=displayKC&externalId=1031298](https://kb.vmware.com/selfservice/microsites/search.do?language=en_US&cmd=displayKC&externalId=1031298)

**QUESTION 65**

An administrator is attempting to restore a number of files in a directory within the Operating System of a virtual machine.

How can the administrator restore the files from a previous backup?

- A. Use the File Level Restore option from the selected backup of the virtual machine in the vSphere Web Client.
- B. Connect to the File Level Restore tool from a web browser in the virtual machine.
- C. Connect to the File Level Restore tool from the VMware Data Protection appliance.
- D. Use the File Level Restore option from the selected backup of the virtual machine in the vSphere Client.

**Correct Answer: B**

**Section: (none)**

**Explanation**



**Explanation/Reference:**

Explanation:

The file-level restore is web-based, so a supported web browser is required.

Reference: [https://kb.vmware.com/selfservice/microsites/search.do?language=en\\_US&cmd=displayKC&externalId=2016565](https://kb.vmware.com/selfservice/microsites/search.do?language=en_US&cmd=displayKC&externalId=2016565)

**QUESTION 66**

What are three valid disk configurations for the vSphere Data Protection 6.x Appliance? (Choose three.)

- A. 500GB B.
- 1TB



<https://vceplus.com/>

- C. 1.5TB
- D. 2TB
- E. 4TB

**Correct Answer:** ABC

**Section:** (none)

**Explanation**

**Explanation/Reference:**

Explanation:

VDP supports these specifications:

- Each vCenter Server can support up to 10 VDP appliances.
- Each VDP appliance supports backup for up to 100 virtual machines.
- Only 1 VDP appliance can exist per ESXi/ESX host.
- Support for 0.5 TB, 1 TB, or 2 TB of deduplicated backup data.

Reference: [https://kb.vmware.com/selfservice/microsites/search.do?language=en\\_US&cmd=displayKC&externalId=2016565](https://kb.vmware.com/selfservice/microsites/search.do?language=en_US&cmd=displayKC&externalId=2016565)

#### QUESTION 67

When configuring vSphere Replication for a virtual machine, what is the lowest Recovery Point Objective (RPO) that can be selected?

- A. 1 min
- B. 5 min
- C. 10 min
- D. 15min

**Correct Answer:** D





**Section: (none)**

**Explanation**

**Explanation/Reference:**

Explanation:

The available range is from 15 minutes to 24 hours.

Reference: [https://pubs.vmware.com/vsphere-51/index.jsp?topic=%2Fcom.vmware.vsphere.replication\\_admin.doc%2FGUID-C249300C-2BC0-4128-88B5046C3DE6BC5B.html](https://pubs.vmware.com/vsphere-51/index.jsp?topic=%2Fcom.vmware.vsphere.replication_admin.doc%2FGUID-C249300C-2BC0-4128-88B5046C3DE6BC5B.html)

**QUESTION 68**

Which three steps must be taken to use vSphere Update Manager 6.x to upgrade an ESXi 5.5 host to vSphere 6.x? (Choose three.)

- A. Download an ESXi Image.
- B. Configure the vSphere Update Manager Download Service.
- C. Create a baseline and attach it to the ESXi Host.
- D. Scan the vCenter Content Library for the ESXi Image.
- E. Remediate the ESXi Host.

**Correct Answer:** ACE

**Section: (none)**

**Explanation**



**Explanation/Reference:**

Explanation:

First, download an ESXi image. Create a baseline and attach it to the ESXi host. Now remediate the host.

Reference: [https://kb.vmware.com/selfservice/microsites/search.do?language=en\\_US&cmd=displayKC&externalId=2109711](https://kb.vmware.com/selfservice/microsites/search.do?language=en_US&cmd=displayKC&externalId=2109711)

**QUESTION 69**

An administrator enables vSphere High Availability (HA) on an existing cluster with a large number of hosts and virtual machines. The administrator notices that the setup of vSphere HA on some of the hosts is failing.

What step, if taken, might resolve this issue?

- A. Increase the value of the config.vpxd.das.electionWaitTimeSec setting.
- B. Set the value of vpxd.das.aamMemoryLimit to 256.
- C. Set the value of the das.useDefaultIsolationAddress setting to False.
- D. Increase the value of the das.iostatsinterval setting.

**Correct Answer:** A

**Section:** (none)

**Explanation**

**Explanation/Reference:**

Explanation:

Set the vCenter Server advanced option config.vpxd.das.electionWaitTimeSec to value=240. Once this change is made, the time outs do not occur.

Reference: <https://pubs.vmware.com/vsphere-51/index.jsp?topic=%2Fcom.vmware.vsphere.troubleshooting.doc%2FGUID-A93A0F08-DB77-4850-B87D93CCDF407D8D.html>

### QUESTION 70

An attempt to enable vSphere Fault Tolerance for a powered-on virtual machine fails.

Which two scenarios would result in this failure? (Choose two.)

- A. The virtual machine has three vCPUs configured.
- B. The host on which the virtual machine is running has insufficient memory resources.
- C. The virtual machine has insufficient resources to accommodate full reservation plus the overhead memory.
- D. VMware High Availability is enabled on the cluster of which this host is a member.

**Correct Answer:** BC

**Section:** (none)

**Explanation**

**Explanation/Reference:**

Explanation:

vSphere Fault Tolerance automatically tries to allocate a full memory reservation on the host for the VM. Overhead memory is required for fault tolerant VMs and can sometimes expand to 1 to 2 GB. If the powered-on VM is running on a host that has insufficient memory resources to accommodate the full reservation plus the overhead memory, trying to turn on Fault Tolerance fails. Subsequently, the Unknown error message is returned.

Reference: <https://pubs.vmware.com/vsphere-60/index.jsp?topic=%2Fcom.vmware.vsphere.troubleshooting.doc%2FGUID-C9A5157F-899B-4E6F-BE76BA1AA8091EE3.html>

### QUESTION 71

An administrator is unable to remove an ESXi 6.x host from a vSphere Distributed Switch.

What are two likely reasons for this issue? (Choose two.)

- A. Vmkernel interfaces on the switch are still in use.

- B. VM Network port group adapters are connected to different switch.
- C. Physical NICs are migrated to different switch.
- D. VM Network adapters are connected to this switch.

**Correct Answer:** AD

**Section:** (none)

**Explanation**

**Explanation/Reference:**

Explanation:

You cannot remove the host from the distributed switch or delete the host proxy switch because of the following reasons.

There are VMkernel adapters on the switch that are in use.

There are virtual machine network adapters connected to the switch.

Reference: <https://pubs.vmware.com/vsphere-55/index.jsp?topic=%2Fcom.vmware.vsphere.troubleshooting.doc%2FGUID-038AC93F-D710-48ED-8E3B258A23FB2930.html>

#### **QUESTION 72**

An administrator is attempting to enable Storage I/O Control on a datastore, but it is failing.

What is the likely reason for this failure?

- A. The host is connected to a datastore is running on ESX 4.0.
- B. The host is connected to a Fibre Channel storage array.
- C. The datastore has multiple extents.
- D. The datastore is managed by a single vCenter Server.

**Correct Answer:** A

**Section:** (none)

**Explanation**

**Explanation/Reference:**

Explanation:

If you experience problems with SIOC or if the number of hosts connected to the datastore has changed since enabling SIOC:

Disable SIOC and save the changes by clicking OK.

Enable SIOC and save the changes.

Reference: [https://kb.vmware.com/selfservice/microsites/search.do?language=en\\_US&cmd=displayKC&externalId=1022091](https://kb.vmware.com/selfservice/microsites/search.do?language=en_US&cmd=displayKC&externalId=1022091)

### QUESTION 73

Which scenario shows a reason for VMware Tools failing to install?

- A. Virtual machine has a CD-ROM configured.
- B. Guest OS Antivirus is blocking the VMware Tools installation.
- C. Guest OS has 64-bit ldd (list dynamic dependencies) utility installed.
- D. Virtual machine is powered on.

**Correct Answer:** B

**Section:** (none)

**Explanation**

**Explanation/Reference:**

Explanation:

One of the reasons for VMware tools to fail during installation is that the Guest OS antivirus is blocking the installation thinking it is a malware.

Reference: <https://www.vmware.com/pdf/vmware-tools-installation-configuration.pdf>

### QUESTION 74

An administrator is troubleshooting basic network connectivity issues.

Which two scenarios are potential issues that this administrator might face? (Choose two.)

- A. The vSwitch is not attached to the correct physical network.
- B. The portgroup is not configured to use correct VLAN.
- C. Traffic shaping is configured incorrectly.
- D. Jumbo frames is configured incorrectly.

**Correct Answer:** AB

**Section:** (none)

**Explanation**

**Explanation/Reference:**

Explanation:

Common network connectivity issues can happen anytime during the operation. The vSwitch is not attached to the correct physical network or the portgroup is not configured to use correct VLAN might be some of the causes that admin has to face during network connectivity. Reference:

<http://blogs.vmware.com/kb/2013/02/troubleshooting-network-teaming-problems-in-esxesxi.html>

#### QUESTION 75

An administrator has unsuccessfully attempted several times to install an Operating System inside a virtual machine. The administrator finds that the installation fails at random intervals.

Which two actions can be taken to resolve this issue? (Choose two.)

- A. Verify the md5sum and if invalid, download the installation files again.
- B. Attempt the installation an additional time.
- C. Attempt to use a different installation media or installation method.
- D. Create a new virtual machine and attempt the installation with the existing media.

**Correct Answer:** AC

**Section:** (none)

**Explanation**

**Explanation/Reference:**

Explanation:

First verify md5sum and if it is invalid, download installation files again. Secondly, attempt to use a different installation media because the one used might be corrupt.

Reference:



#### QUESTION 76

A Fault Tolerance (FT) virtual machine with four vCPUs is experiencing high latency when performing ICMP and Application tests.

What are three potential causes that may be attributing to this latency? (Choose three.)

- A. The FT network has insufficient bandwidth and is running on a 1GB Link.
- B. The FT network is on a particularly high latency link.
- C. The FT network has been configured with Network I/O Control.
- D. The FT virtual machine is running an e1000 network adapter.
- E. The FT virtual machine is running on poor performing network-based storage.

**Correct Answer:** ABC

**Section:** (none)

## Explanation

### Explanation/Reference:

Explanation:

The latency can be caused by FT network having insufficient bandwidth and is running on a 1 GB link or the network is on a particularly high latency risk. The other reason might be that the FT network has been configured with network I/O control. Reference:

### QUESTION 77

An application running in a virtual machine is experiencing performance issues. When utilizing performance monitoring utilities, it is noted that the CPU Utilization of the application is at 100%.

Which two scenarios are probable causes of the CPU contention for the application? (Choose two.)

- A. There is a network I/O constraint.
- B. There is a storage I/O constraint.
- C. There is insufficient disk space assigned to the virtual machine.
- D. The application is not virtualization aware.

**Correct Answer:** AB

**Section:** (none)

**Explanation**



### Explanation/Reference:

Explanation:

There are two possible causes. One is a network I/O constraint and the other is storage I/O constraint.

Reference: [https://kb.vmware.com/selfservice/microsites/search.do?language=en\\_US&cmd=displayKC&externalId=2001003](https://kb.vmware.com/selfservice/microsites/search.do?language=en_US&cmd=displayKC&externalId=2001003)

### QUESTION 78

A user is trying to retrieve objects from a SharePoint server and finds the request is taking an excessive amount of time. An administrator tries to isolate the issue and notes the following:

- Application performance is poor when compared to virtual machines on other hosts.
- Performance improves when the virtual machine is moved to another host. ▪

The virtual machine encounters higher than expected CPU %Ready times.

What conclusion can be reached regarding the performance issues for this virtual machine?

- A. Host Power Management is directly impacting virtual machine performance.
- B. The virtual machine has a large number of snapshots.

- C. The Path Selection Policy for the storage device is set differently on the affected host.
- D. Network I/O control is configured for the portgroup.

**Correct Answer:** A

**Section:** (none)

**Explanation**

**Explanation/Reference:**

Explanation:

Processor Power Management (Power Saving, Power Scaling) is impacting application performance on virtual machines.

Reference: [https://kb.vmware.com/selfservice/microsites/search.do?language=en\\_US&cmd=displayKC&externalId=1018206](https://kb.vmware.com/selfservice/microsites/search.do?language=en_US&cmd=displayKC&externalId=1018206)

### QUESTION 79

When attempting to access a virtual machine, an administrator is unable to login using the vSphere credentials.

What two options are probable causes of the authentication failure? (Choose two.)

- A. The vSphere credentials have not been granted permissions.
- B. The vSphere credentials are granted read-only permissions.
- C. The vSphere credentials are granted no-access permissions.
- D. The vSphere credentials are not a member of the local administrator group.

**Correct Answer:** AB

**Section:** (none)

**Explanation**

**Explanation/Reference:**

Explanation:

While the details of authentication and authorization differ between ESX/ESXi and vCenter Server, the model itself is the same for both system. It relies on privileges, roles, and permissions.

Reference: [https://pubs.vmware.com/vsphere-50/index.jsp?topic=%2Fcom.vmware.wssdk.pg.doc\\_50%2FPG\\_Ch6\\_Authenticate\\_Authorize.8.3.html](https://pubs.vmware.com/vsphere-50/index.jsp?topic=%2Fcom.vmware.wssdk.pg.doc_50%2FPG_Ch6_Authenticate_Authorize.8.3.html)

### QUESTION 80

A physical Windows 2008 R2 Server is converted to a virtual machine using VMware vCenter Converter. Upon completion of the conversion and subsequent power on operation, the virtual machine fails to boot and the message below is observed in the Console of the virtual machine:

```
STOP 0x0000007B INACCESSIBLE_BOOT_DEVICE
```

Which two potential issues may be causing this boot failure? (Choose two.)

- A. An incorrect SCSI controller was selected during conversion.
- B. Incompatible software drivers were migrated into the virtual machine from the source machine.
- C. The vmdk file backing the virtual machine was thick provisioned.
- D. A snapshot was taken immediately after the conversion completed.

**Correct Answer:** AB

**Section:** (none)

**Explanation**

**Explanation/Reference:**

Explanation:

It might be the incorrect SCSI controller was selected during conversion or the incompatible software drivers were migrated into the VM from source machine.

Reference: [https://kb.vmware.com/selfservice/microsites/search.do?language=en\\_US&cmd=displayKC&externalId=1016330](https://kb.vmware.com/selfservice/microsites/search.do?language=en_US&cmd=displayKC&externalId=1016330)

#### QUESTION 81

When attempting to power on a Virtual Machine you observe the following error:

Cannot open the disk '/vmfs/volumes/volume/vm/vm-000002.vmdk' or one of the snapshot disks it depends on.

Which three actions will be the best solutions to address this problem? (Choose three.)

- A. Verify that the virtual machine's disk files are present.
- B. Investigate the host and virtual machine log files.
- C. Verify the vmdk descriptor files and if required, recreate them.
- D. Delete the disk file preventing the power on operation.
- E. Migrate or register the virtual machine to a different host.

**Correct Answer:** ABC

**Section:** (none)

**Explanation**

**Explanation/Reference:**

Explanation:

First verify that the VM disk files are present. Check host and VM log files. Verify vmdk descriptor files and recreate them if required.

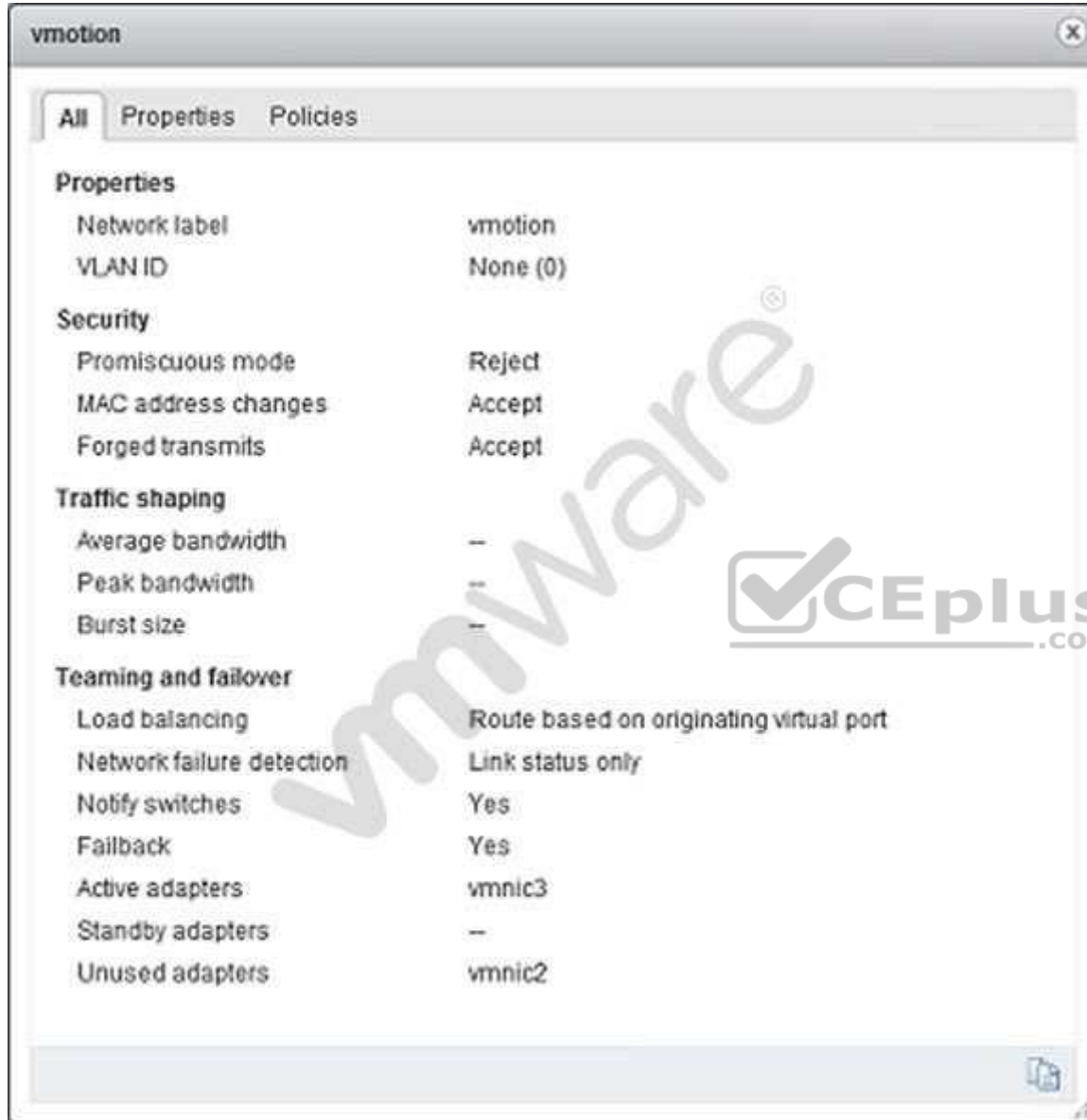
Reference: [https://kb.vmware.com/selfservice/microsites/search.do?language=en\\_US&cmd=displayKC&externalId=1004232](https://kb.vmware.com/selfservice/microsites/search.do?language=en_US&cmd=displayKC&externalId=1004232)



**QUESTION 82**

Refer to the Exhibit.





An administrator has been given requirements to configure vMotion for a new virtual machine. The configuration should:

- Provide Network Redundancy ▪
- Use VLAN 550
- Be secured against anyone trying to spoof communication

The vSwitch1 configuration is shown in the Exhibit.

Which three changes should be made to meet the stated requirements? (Choose three.)

- A. The VLAN ID must be set appropriately.
- B. The default values for MAC Address Changes and Forged Transmits must be altered.
- C. The teaming and failover adapters must be set appropriately.
- D. The Traffic Shaping configuration must be altered.
- E. The Load Balancing Policy must be set appropriately.

**Correct Answer:** ABC

**Section:** (none)

**Explanation**

**Explanation/Reference:**

Explanation:

First, VLAN ID must be set appropriately. Default values for Mac address changes and forged transmits must be altered and the teaming and failover adapters must be set accordingly. Reference:

**QUESTION 83**

Refer to the Exhibit.



**Adapter Details**

Properties Devices **Paths**

Enable Disable

Runtime Name	Target	LUN	Status
vmhba2:C0:T3:L0	50:06:01:60:c7:20:6a:a4 50:06:0...	0	◆ Active (I/O)
vmhba2:C0:T2:L0	50:06:01:60:c7:20:6a:a4 50:06:0...	0	◆ Active (I/O)
vmhba2:C0:T1:L0	50:06:01:60:c7:20:6a:a4 50:06:0...	0	◇ Dead (I/O)
vmhba2:C0:T0:L0	50:06:01:60:c7:20:6a:a4 50:06:0...	0	◆ Active (I/O)

A storage administrator is not seeing full utilization of all bandwidth from an ESXi host. The vSphere administrator observes the adapter details, as shown in the Exhibit.

What is the probable cause of this issue?

- A. Another path needs to be used to allow full utilization of the bandwidth.
- B. The array is not setup to use the correct multipathing policy.
- C. There are no virtual machines on the host.
- D. No traffic is being sent across it because a path failed.

**Correct Answer: D**

**Section: (none)**

**Explanation**

**Explanation/Reference:**

Explanation:

It seems that no traffic is being sent across it due to the path that has failed.

Reference:

#### QUESTION 84

An administrator is installing a new network card in an ESXi 6.x host that is part of a vSphere cluster. When the host is placed into maintenance mode, the vSphere Web Client displays the progress bar at 2% for over 30 minutes.

Which two are likely reasons for this occurrence? (Choose two.)

- A. Maintenance mode is unable to migrate all virtual machines from the host.
- B. There is a large number of virtual machines that must be migrated from the host.
- C. VMware High Availability is in the process of reconfiguring the cluster.
- D. Each virtual machine on the ESXi host must be reconfigured to recognize the new adapter.

**Correct Answer:** AB

**Section:** (none)

**Explanation**

**Explanation/Reference:**

Explanation:

The maintenance mode is unable to migrate all virtual machines from the host. There is a large number of VMs that must be migrated first.

Reference: [https://kb.vmware.com/selfservice/microsites/search.do?language=en\\_US&cmd=displayKC&externalId=1005241](https://kb.vmware.com/selfservice/microsites/search.do?language=en_US&cmd=displayKC&externalId=1005241)

#### QUESTION 85

An administrator is attempting to remove an ESXi 6.x host from a vSphere Distributed Switch (vDS). When the administrator attempts to remove the host, the following error is observed:

The resource '16' is still in use.

What three steps are needed to successfully remove the host from the switch? (Choose three.)

- A. Select Manage Ports on the vDS for the host.
- B. Locate all ports currently in use on the vDS for the host.
- C. Migrate or delete any vmkernel or virtual machine adapters associated with the switch.
- D. Remove all network cards from the switch before trying to remove the host.
- E. Create a standard switch for everything to be automatically be migrated to.

**Correct Answer:** ABC

**Section:** (none)

**Explanation**

**Explanation/Reference:**

Explanation:

To remove the host from the switch select manage ports on the vDS along with locating all ports currently in use. Migrate or delete any vmkernel or virtual machine adapters.

Reference: <https://pubs.vmware.com/vsphere-55/index.jsp?topic=%2Fcom.vmware.vsphere.troubleshooting.doc%2FGUID-038AC93F-D710-48ED-8E3B258A23FB2930.html>

**QUESTION 86**

Users of an application are reporting performance issues. The following performance values are observed in the vSphere Web Client:

- Host CPU utilization is 90%
- Virtual Machine memory utilization is consistently greater than 90%
- CPU Ready values are higher than 20%

What could be the cause of the application performance issue?

- A. The host is lacking the CPU resources required to meet the demand.
- B. The host is lacking the memory resources required to meet the demand.
- C. The virtual machine is lacking the CPU resources required to meet the demand.
- D. The virtual machine is lacking the memory resources required to meet the demand.

**Correct Answer:** A

**Section:** (none)

**Explanation**

**Explanation/Reference:**

Explanation:

A short spike in CPU usage indicates that you are making the best use of the host resources. However, if the value is constantly high, the host is probably lacking the CPU required to meet the demand. Reference:

**QUESTION 87**

An administrator reports that the System Event log data is only available for 24 hours when reviewing the Hardware Status tab.

Which condition could be responsible for the loss of data?

- A. A Reset event log was executed.
- B. The statistical collection level was set to a value of 1.
- C. The boot disk of the host is corrupt.
- D. Syslog has been configured at the vCenter Server level.

**Correct Answer:** A  
**Section:** (none)  
**Explanation**

**Explanation/Reference:**

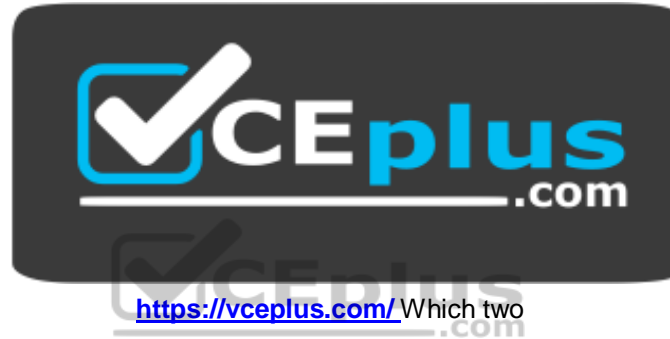
Explanation:

It clearly shows that the reset event log was executed that's why data is available for 24 hours only.

Reference: [https://kb.vmware.com/selfservice/microsites/search.do?language=en\\_US&cmd=displayKC&externalId=2061093](https://kb.vmware.com/selfservice/microsites/search.do?language=en_US&cmd=displayKC&externalId=2061093)

**QUESTION 88**

An administrator receives a report that no real time statistics are available for a virtual machine in the vCenter Server inventory.



statements indicate likely causes of the problem? (Choose two.)

- A. The virtual machine is powered off.
- B. The host containing the virtual machine is disconnected from vCenter Server.
- C. There is insufficient real time data to display the information.
- D. The vCenter Server service is not running.

**Correct Answer:** AB  
**Section:** (none)  
**Explanation**

**Explanation/Reference:**

Explanation:

The most likely cause might be that the virtual machine is powered off or the host containing the VM is disconnected from the vCenter server.

Reference: [https://kb.vmware.com/selfservice/microsites/search.do?language=en\\_US&cmd=displayKC&externalId=1003979](https://kb.vmware.com/selfservice/microsites/search.do?language=en_US&cmd=displayKC&externalId=1003979)

**QUESTION 89**

A virtual machine is experiencing performance issues. The following performance metrics are observed:

- CPU usage value for the virtual machine is above 90%
- CPU ready value for the virtual machine is above 20%

Which two activities will likely resolve the performance issues? (Choose two.)

- A. Set a CPU reservation for the virtual machine.
- B. Increase the CPU limit on the virtual machine.
- C. Decrease CPU shares equally for all virtual machines on the host.
- D. Increase CPU shares equally for all virtual machines on the host.

**Correct Answer:** AB

**Section:** (none)

**Explanation**

**Explanation/Reference:**

Explanation:

Set a CPU reservation for the virtual machine and increase the CPU limit on the virtual machine.

Reference:

#### **QUESTION 90**

An administrator wants to add a web server to an existing multi-tier application consisting of three virtual machines:

- A web server
- A database server
- An application server

The web server should be added to the application when the primary web server reaches:

- 70% vCPU utilization
- 55% active memory

Which option will achieve this result?

- A. Create a virtual machine alarm with an action to run a script that starts a new instance of the web server.
- B. Create a host cpu and memory alarm with an action to run a script that starts a new instance of the webserver.
- C. Configure High Availability application monitoring for the web server and set it to trigger deployment of a new instance of the web server.
- D. Configure Fault Tolerance on the virtual machine and leave the secondary machine disabled until needed.



**Correct Answer:** A

**Section:** (none)

**Explanation**

**Explanation/Reference:**

Explanation:

You have to create a new VM alarm with an action to run a script that starts with a new instance of the web server.

Reference:

**QUESTION 91**

An administrator has configured an alarm to be notified when a virtual machine meets either of these conditions: ▪

High virtual CPU

▪ High active memory consumption.

The alarm is only triggering when both of the conditions are met.

What can be done to correct the alarm behavior?

- A. Edit the alarm and select Trigger if ANY of the following conditions are satisfied.
- B. Edit the alarm and select Trigger if ALL of the following conditions are satisfied.
- C. Create two separate alarms, one for CPU and one for memory and link them together with ESXCLI.
- D. Delete the existing alarm and create a new event based alarm.

**Correct Answer:** A

**Section:** (none)

**Explanation**

**Explanation/Reference:**

Explanation:

Edit the alarm and select Trigger if All of the following conditions are satisfied.

Reference: [https://pubs.vmware.com/vsphere-4-esx-vcenter/index.jsp?topic=/com.vmware.vsphere.dcadm.doc\\_41/vc\\_client\\_help/working\\_with\\_alarms/c\\_condition\\_and\\_state\\_triggers.html](https://pubs.vmware.com/vsphere-4-esx-vcenter/index.jsp?topic=/com.vmware.vsphere.dcadm.doc_41/vc_client_help/working_with_alarms/c_condition_and_state_triggers.html)

**QUESTION 92**

An administrator deploys vRealize Operations into a vSphere 6.x environment. After the deployment, the administrator notices that badges are not appearing.

What is a likely cause of this behavior?

- A. Badges do not appear until you register vRealize Operations with vCenter Server.

- B. Badges do not appear until you register a vCenter Server in vRealize Operations.
- C. The vRealize Operations appliance needs to be redeployed.
- D. The vCenter Server appliance needs to be redeployed.

**Correct Answer:** A

**Section:** (none)

**Explanation**

**Explanation/Reference:**

Explanation:

If the badges are not appearing, check if you registered vRealize operations with vcenter server.

Reference: <https://www.vmware.com/support/vrops/doc/vrops-60-release-notes.html>

### QUESTION 93

An administrator is unable to create the first group in a new vRealize Operations environment.

What is the likely cause of the problem?

- A. There are no group types defined.
- B. The group is not defined in SSO.
- C. There are more than 32 group types defined.
- D. The description for the group is not provided.

**Correct Answer:** A

**Section:** (none)

**Explanation**

**Explanation/Reference:**

Explanation: There is no group types defined when administrator is unable to create the first group in a new vRealize Operations environment.

Reference: <https://www.vmware.com/support/vrops/doc/vrops-601-release-notes.html>

### QUESTION 94

An administrator is only able to see the Health Badge when using the vRealize Operations user interface.

What is the likely cause of this behavior?

- A. The vRealize Operations Foundation License is in use.
- B. The vmware-sps service failed to start.
- C. The vRealize Operations Standard License is in use.

D. The vmware-rbd-watchdog service failed to start.

**Correct Answer:** A

**Section:** (none)

**Explanation**

**Explanation/Reference:**

Explanation:

It seems that the vRealize operations foundation license is in use.

### QUESTION 95

Which three are architecture components of vRealize Operations? (Choose three.)

- A. Identity Server
- B. Administrative Server
- C. Analytics Server
- D. Database Server
- E. Connection Broker

**Correct Answer:** BCD

**Section:** (none)

**Explanation**

**Explanation/Reference:**

Explanation:

Administrative, analytics and database server are active components of vRealize operations.

Reference: [https://books.google.com.pk/books?id=VD6qCQAAQBAJ&pg=PA5&lpg=PA5&dq=architectural+components+of+vrealize+operation+administrative+server+analytics+server+database+server&source=bl&ots=GfIG7QQwWL&sig=0vLuiJryvZlqvon1Gc1fuo8e0tg&hl=en&sa=X&ved=0ahUKEwjn79m\\_gdDNAhVERo8KHQ1VC3QQ6AEIRDAH#v=onepage&q=architectural%20components%20of%20vrealize%20operation%20administrative%20server%20analytics%20server%20database%20server&f=false](https://books.google.com.pk/books?id=VD6qCQAAQBAJ&pg=PA5&lpg=PA5&dq=architectural+components+of+vrealize+operation+administrative+server+analytics+server+database+server&source=bl&ots=GfIG7QQwWL&sig=0vLuiJryvZlqvon1Gc1fuo8e0tg&hl=en&sa=X&ved=0ahUKEwjn79m_gdDNAhVERo8KHQ1VC3QQ6AEIRDAH#v=onepage&q=architectural%20components%20of%20vrealize%20operation%20administrative%20server%20analytics%20server%20database%20server&f=false)

### QUESTION 96

Which two badges are major badges in vRealize Operations? (Choose two.)

- A. Risk
- B. Efficiency
- C. Workload
- D. Faults



**Correct Answer:** AB

**Section:** (none)

**Explanation**

**Explanation/Reference:**

Explanation:

vC Ops has 3 major badges and their status depends on the minor badges whose scores get rolled up to make up the major badges. Those 3 major badges are Health, Risk, and Efficiency. Each of these 3 badges are weighted combinations of minor badges. Thus, the major badges are the color and numerical score that they are because of the status of the minor badges that they are summarizing.

Reference: <http://blogs.vmware.com/management/2014/04/david-davis-on-vcenter-operations-post-8-understanding-vcenter-operations-badges.html>

#### **QUESTION 97**

A user wants to monitor a business-critical virtual machine to ensure that it doesn't run out of resources.

What metric could be monitored in vRealize Operations to address this concern?

- A. Time Remaining badge
- B. Compliance badge
- C. Reclaimable Waste badge
- D. Density badge



**Correct Answer:** A

**Section:** (none)

**Explanation**

**Explanation/Reference:**

Explanation:

You need to monitor time remaining badge to ensure virtual machine doesn't run out of resources.

Reference: <http://blogs.vmware.com/tam/files/2015/02/vRealize-Operations-5.8-Guide1.pdf>

#### **QUESTION 98**

After selecting an object in vRealize Operations, how can a user compare the badge values of related child objects?

- A. Use the Scoreboard tab
- B. Use the Relationship tab
- C. Use the Members tab
- D. Use the Overview tab

**Correct Answer:** A

**Section:** (none)

**Explanation**

**Explanation/Reference:**

Explanation:

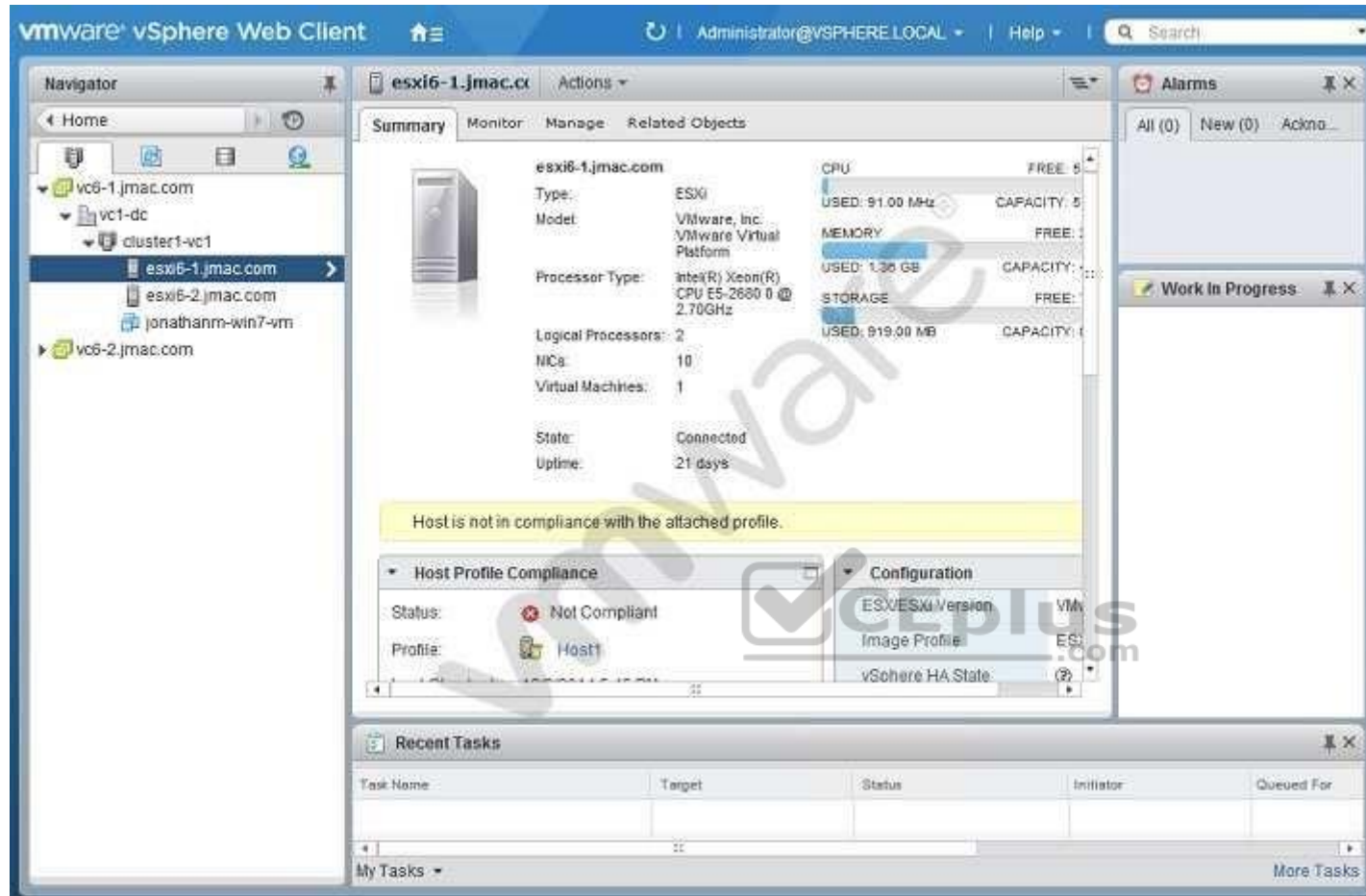
Use scoreboard tab to compare the badge values of related child objects.

Reference: <http://blogs.vmware.com/management/2014/08/david-davis-vcenter-operations-post-14-capacity-analysis-virtual-machines.html>

**QUESTION 99**

Refer to the Exhibit.





An administrator logs into the vSphere Web Client and sees the warning shown in the Exhibit.

During a change control window, the warning was addressed.

What should be done to verify that the host is no longer showing the warning?

- A. Run a Remediate host operation.
- B. Recheck the compliance of the host.
- C. Restart the host to get rid of the warning.

D. Install VMware tools to clear the warning.

**Correct Answer: B**

**Section: (none)**

**Explanation**

**Explanation/Reference:**

Explanation:

To make sure the host is no longer showing the warning, recheck the compliance of the host.

Reference:

**QUESTION 100**

Refer to the Exhibit.

**Adapter Details**

Properties Devices **Paths**

Enable Disable

Runtime Name	Target	LUN	Status
vmhba2:C0:T3:L0	50:06:01:60:c7:20:6a:a4 50:06:0...	0	◆ Active (I/O)
vmhba2:C0:T2:L0	50:06:01:60:c7:20:6a:a4 50:06:0...	0	◆ Active (I/O)
vmhba2:C0:T1:L0	50:06:01:60:c7:20:6a:a4 50:06:0...	0	◇ Disabled
vmhba2:C0:T0:L0	50:06:01:60:c7:20:6a:a4 50:06:0...	0	◆ Active

A storage administrator has reported that full utilization of all bandwidth from an ESXi 6.x host is not being seen. In troubleshooting the issue, the Adapter details are shown in the Exhibit.

Based on the exhibit, what is cause of the issue?

- A. The array is not setup to use the correct multipathing policy.
- B. There are no virtual machines on the ESXi host.

- C. Not all links are used because a path is disabled.
- D. Another path needs to be configured.

**Correct Answer:** C

**Section:** (none)

**Explanation**

**Explanation/Reference:**

Explanation:

The cause might be that not all links are used because a path is disabled as you can see in the third row.

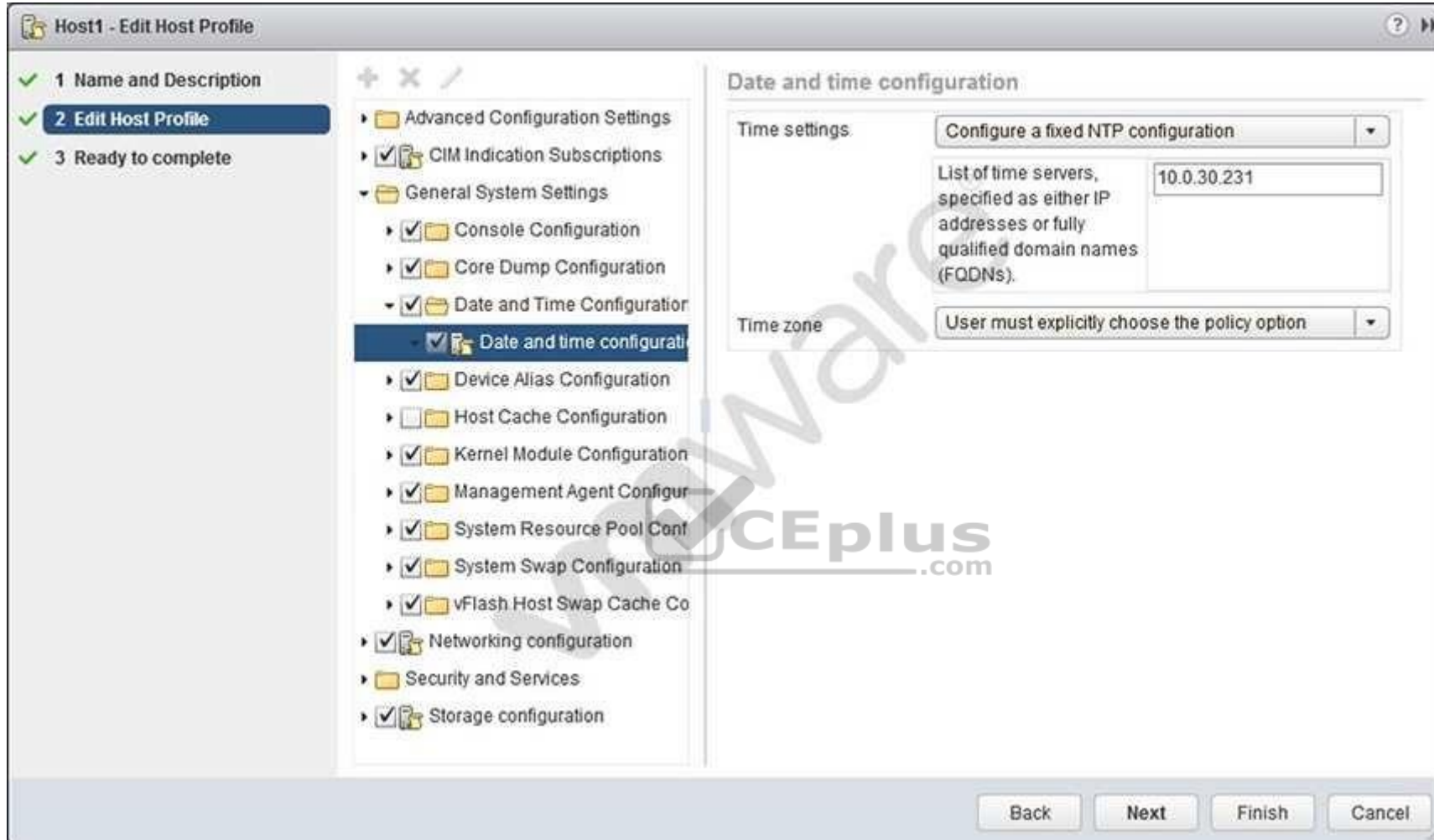
Reference:

**QUESTION 101**

Refer to the Exhibit.







An administrator has configured a host profile so that ESXi 6.x hosts will point to the corporate NTP server for time synchronization. The NTP server is located at 10.0.30.213, but time has not been synchronized properly across the ESXi hosts.

The administrator reviews Host Profile settings as shown in the Exhibit.

Which two steps are required to resolve the issue? (Choose two.)

- A. Correct the NTP server IP address.
- B. Check the host for host profile compliance.
- C. Remediate the host based on the updated host profile.
- D. Change the NTP server to the FQDN as IP Addresses are not supported.

**Correct Answer:** AC

**Section:** (none)

**Explanation**

**Explanation/Reference:**

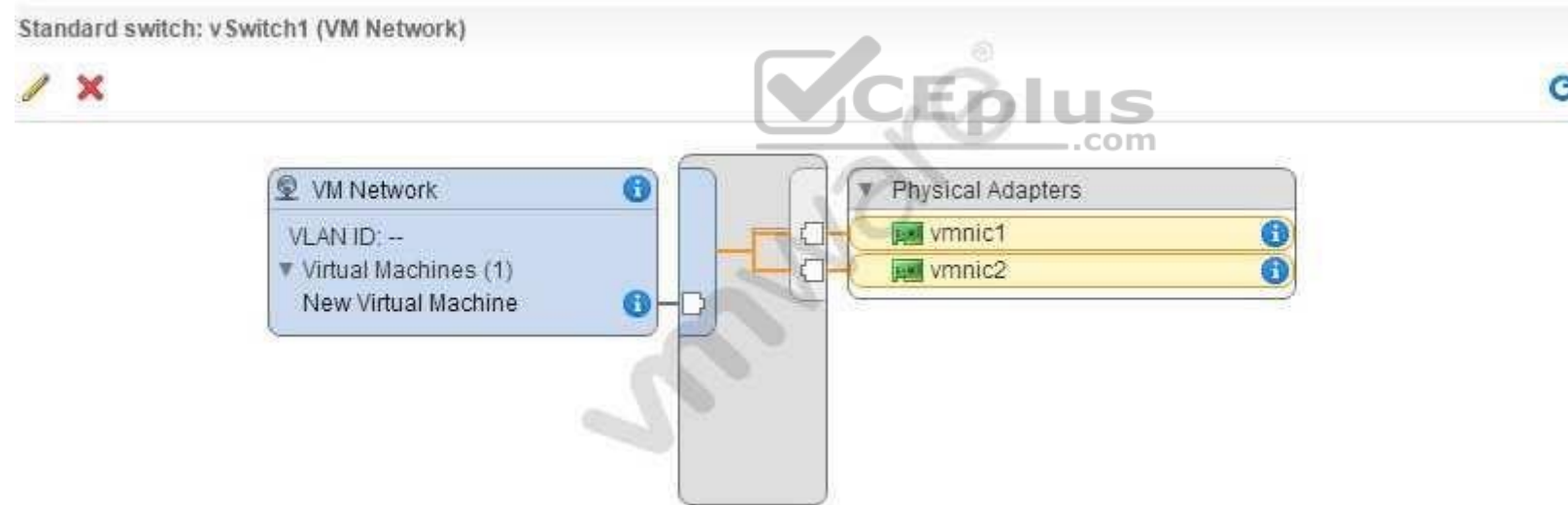
Explanation:

To resolve the issue, correct the NTP server IP address (it doesn't look right), and remediate the host based on the updated host profile.

Reference:

**QUESTION 102**

Refer to the Exhibit.



An administrator is viewing network connectivity for a new virtual machine, as shown in the Exhibit.

Based on the Exhibit, what will occur with the network traffic of this virtual machine when communicating externally from **vSwitch1**?

- A. The virtual machine will communicate on both uplinks
- B. The virtual machine will only communicate on vmnic1
- C. The virtual machine will only communicate on vmnic2
- D. The virtual machine will fail to communicate externally

**Correct Answer:** D

**Section:** (none)

**Explanation**

**Explanation/Reference:**

Explanation:

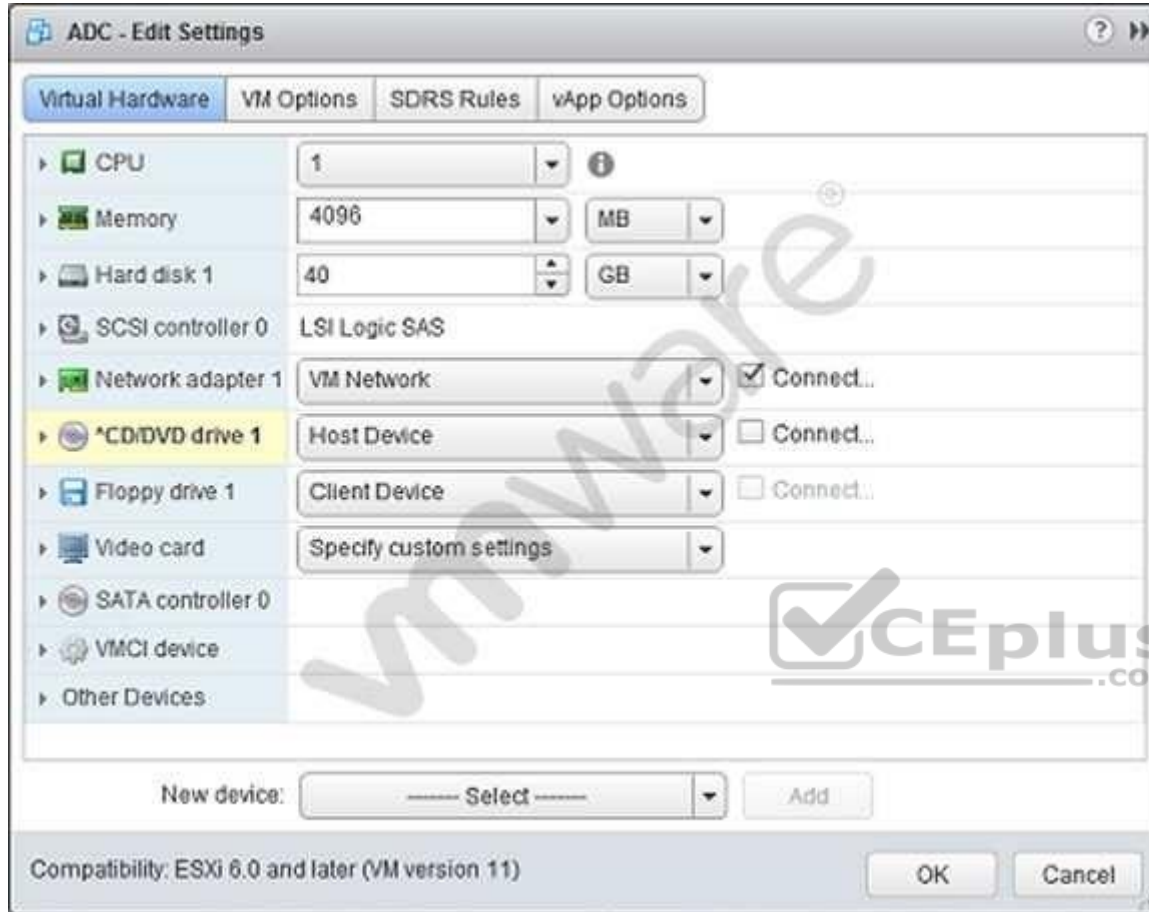
The virtual machine will fail to communicate externally because it seems that the connection to the physical adapters is not right.

Reference:

**QUESTION 103**

Refer to the Exhibit.





An administrator is installing Windows into a virtual machine. The DVD has been mounted on the Host and configured for the virtual machine as shown in the Exhibit.

Based on the exhibit, when the virtual machine is booted, why would it attempt to search for a PXE server?

- A. The CD/DVD device is not connected.
- B. The ISO is in the incorrect storage location.
- C. The OS minimum requirements have not been met.
- D. The CD/DVD device is not set to Client Device.

**Correct Answer:** A  
**Section:** (none)  
**Explanation**

**Explanation/Reference:**

Explanation:

It looks like the CD/DVD device is not connected. Restart the machine and recheck again. When the system doesn't find CD/DVD drive, it looks for PXE server to boot. Reference:

**QUESTION 104**

Refer to the Exhibit.



An administrator is analyzing a virtual machine as shown in the Exhibit.

What is the current long term risk for this virtual machine?

- A. The virtual machine may run out of memory before April 27.
- B. The virtual machine may continue to function after April 27.
- C. The virtual machine has adequate memory configured for operation for the next 120 days.
- D. The virtual machine has adequate memory reservation configured for operation for the next 120 days.

**Correct Answer:** A  
**Section:** (none)  
**Explanation**

**Explanation/Reference:**

Explanation:

It seems like this virtual machine will run out of memory before April 27 as the graph dips down in the beginning of the image in exhibit.  
Reference:

#### QUESTION 105

An administrator needs to configure an ODBC connection to the database for a vCenter Server install using the Windows built-in system account. What options must the administrator configure to accomplish the connection? (Choose two.)

- A. Create the new ODBC from the **UserDSN** tab.
- B. Select **SQL Server authentication**.
- C. Select **Integrate Windows authentication**.
- D. Create the new ODBC from the **SystemDSN** tab.

**Correct Answer:** BC

**Section:** (none)

**Explanation**

**Explanation/Reference:**

Explanation:

To create a new SQL Server ODBC connection, click Add, select SQL Native Client, and click Finish.  
Type an ODBC data source name (DSN) in the Name text box.

For example, VMware vCenter Server.

(Optional) Type an ODBC DSN description in the Description text box.

Select the server name from the Server drop-down menu.

Type the SQL Server host name in the text box if it is not in the drop-down menu.

Select an authentication method.

- Integrate Windows authentication.

Additionally, you can also enter the Service Principal Name (SPN).

Important

You cannot use this option if the vCenter Server service is running under the Microsoft Windows built-in system account. ▪

SQL Server authentication.

Type your SQL Server login name and password.

Reference: <https://pubs.vmware.com/vsphere-60/index.jsp?topic=%2Fcom.vmware.vsphere.install.doc%2FGUID-E83D153B-F6DB-4355-8806357C8E1F01CF.html>

#### QUESTION 106

What are three changes that could result in a Network rollback operation? (Choose three.)

- A. Blocking all ports in a Virtual Machine Portgroup.
- B. Changing the MTU of a distributed switch.
- C. Updating the VLAN of the management VMkernel network adapter.
- D. Disconnecting the cable from the physical NIC.
- E. Changing the IP settings of management VMkernel network adapters.

**Correct Answer:** BCE

**Section:** (none)

**Explanation**

**Explanation/Reference:**

#### QUESTION 107

An administrator is tasked with setting up an iSCSI solution on an ESXi 6.x host. To provide multiple paths to the iSCSI array, the administrator chooses to setup iSCSI Port Binding.

Which three statements are true in regard to setting up iSCSI Port Binding? (Choose three.)

- A. Port binding works across multiple routers as long as the network mask is the same.
- B. iSCSI target array ports must reside in the same broadcast domain as the VMkernel adapters.
- C. iSCSI VMkernel adapters must be on different virtual switches.
- D. All VMkernel adapters used for iSCSI connectivity must reside in the same virtual switch.
- E. Port binding cannot be used in conjunction with network routing.

**Correct Answer:** BDE

**Section:** (none)

**Explanation**

**Explanation/Reference:**

Explanation:

Port binding is used in iSCSI when multiple VMkernel ports for iSCSI reside in the same broadcast domain and IP subnet to allow multiple paths to an iSCSI array that broadcasts a single IP address. When using port binding, you must remember that:

- Array Target iSCSI ports must reside in the same broadcast domain and IP subnet as the VMkernel port.
- All VMkernel ports used for iSCSI connectivity must reside in the same broadcast domain and IP subnet.
- All VMkernel ports used for iSCSI connectivity must reside in the same vSwitch.
- Currently, port binding does not support network routing.

Reference: <https://kb.vmware.com/s/article/2038869>

#### QUESTION 108

An administrator is trying to determine why a newly-created ESXi host cannot see the configured iSCSI LUNs. The administrator suspects that a colleague entered the iSCSI Qualified Name (IQN) incorrectly in the iSCSI software initiator settings. The IQN entered is: iqn.iscsi.vmware.com.2015-06:lun01

Which two statements explain why the IQN address is incorrect? (Choose two.)

- A. The domain name is written correctly.
- B. The date format is written incorrectly.
- C. The LUN identifier is in the wrong location.
- D. The date is in the wrong location.

**Correct Answer:** CD

**Section:** (none)

**Explanation**

**Explanation/Reference:**

Reference: [https://pubs.vmware.com/vsphere-4-esx-vcenter/index.jsp?topic=/com.vmware.vsphere.server\\_configclassic.doc\\_40/esx\\_server\\_config/introduction\\_to\\_storage/c\\_understanding\\_iscsi\\_naming\\_and\\_addressing.html](https://pubs.vmware.com/vsphere-4-esx-vcenter/index.jsp?topic=/com.vmware.vsphere.server_configclassic.doc_40/esx_server_config/introduction_to_storage/c_understanding_iscsi_naming_and_addressing.html)

#### QUESTION 109

An administrator is editing the management network configuration of an ESXi 6.x host from the vSphere Web Client, but mistakenly puts the incorrect VLAN in place for the management network.

What action do you need to take to correct this?

- A. No action is required. By default, ESXi rolls back configuration changes that disconnect the host.
- B. The ESXi host system configuration will need to be restored to the factory configuration to fix the issue.
- C. Manually edit the configuration on the host with command line utilities.
- D. The change can be reverted in the vSphere Web Client by simply editing the switch again.

**Correct Answer:** A

**Section:** (none)

**Explanation**

**Explanation/Reference:**



**QUESTION 110**

An administrator is trying to open a remote console session to a virtual machine using the vSphere Web Client. With each attempt, an error message is displayed that reads:

HTTP ERROR 404

What is the most likely cause for the error?

- A. Port 902 is blocked by the firewall.
- B. Another program or process is using port 903.
- C. Outgoing UDP is enabled for port 902 on the firewall.
- D. Another program or process is using port 9443.

**Correct Answer:** D

**Section:** (none)

**Explanation**

**Explanation/Reference:**

Reference: <https://docs.vmware.com/en/VMware-vSphere/6.0/com.vmware.vsphere.troubleshooting.doc/GUID-8536C14F-4D4F-4674-846E-08BE321B7A11.html>

**QUESTION 111**

An administrator is monitoring a fully automated vSphere cluster configured with HA, DRS, DPM and EVC. The administrator notices that the cluster has a greater than expected load imbalance.

Why is this happening?

- A. The DRS Migration Threshold is not aggressive enough.
- B. The EVC baseline is masking too many CPU features.
- C. The HA VM Restart Priority is set too high for several virtual machines.
- D. The DPM Threshold is not aggressive enough.

**Correct Answer:** A

**Section:** (none)

**Explanation**

**Explanation/Reference:**

Reference: <https://docs.vmware.com/en/VMware-vSphere/5.5/com.vmware.vsphere.troubleshooting.doc/GUID-0C132C85-E7BF-445E-925D-31420A06B01C.html>

**QUESTION 112**

When attempting to power on a virtual machine, the following error message is shown:

```
Unable to access a file since it is locked
```

What are two actions that can be taken to address this situation? (Choose two.)

- A. Investigate only the logs for the virtual machine.
- B. Investigate the logs for both the host and the virtual machine.
- C. Power off the other virtual machines on the host, then retry the operation.
- D. Reboot the host the virtual machine is running on.

**Correct Answer:** AD

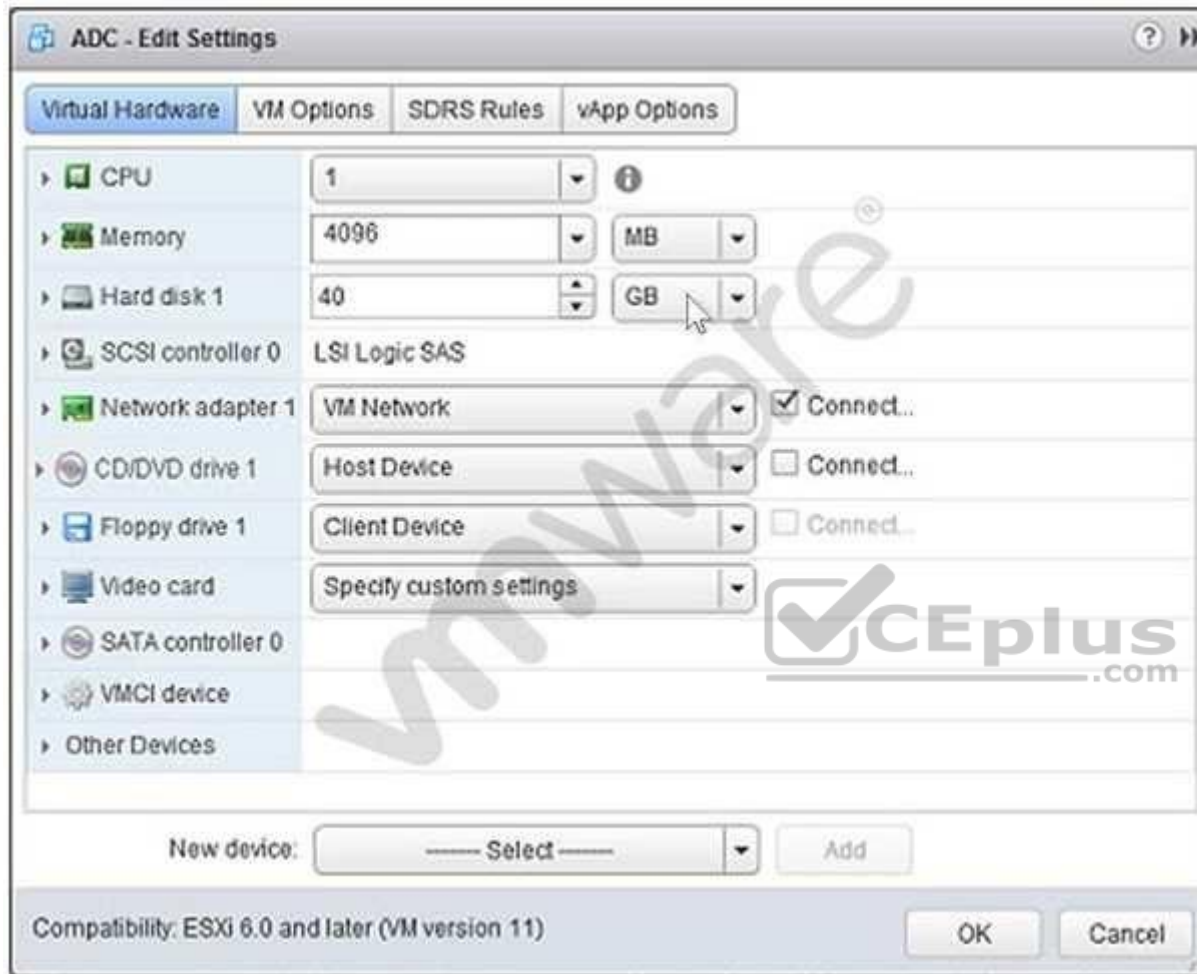
**Section:** (none)

**Explanation**

**Explanation/Reference:**

#### **QUESTION 113**

An administrator is installing Windows into a virtual machine using an image housed in a VMFS datastore. A DVD and a NIC have both been configured on an ESXi 6.x Host and can be used for boot purposes, as shown in the Exhibit. The DVD device is first in the boot order.



Based on the Exhibit, when the host is booted, why would it attempt to search for a PXE server?

- A. The `kickstart.cfg` file was not found.
- B. The CD/DVD device is not set to **Host Device**.
- C. The nic is not PXE enabled.
- D. The CD/DVD device is not connected.

**Correct Answer:** D

**Section:** (none)

**Explanation**

**Explanation/Reference:**

It looks like the CD/DVD device is not connected. Restart the machine and recheck again. When the system doesn't find CD/DVD drive, it looks for PXE server to boot.

**QUESTION 114**

An administrator is configuring load balancing for a vSphere 6.x deployment. The administrator wants optimal load distribution, but the network team has established that no changes can be made to the physical network.

What load balancing meets the stated requirements?

- A. Route based on Mac hash.
- B. Route based on IP hash.
- C. Route based on the originating virtual port.
- D. Route based on physical virtual port.

**Correct Answer:** C

**Section:** (none)

**Explanation**

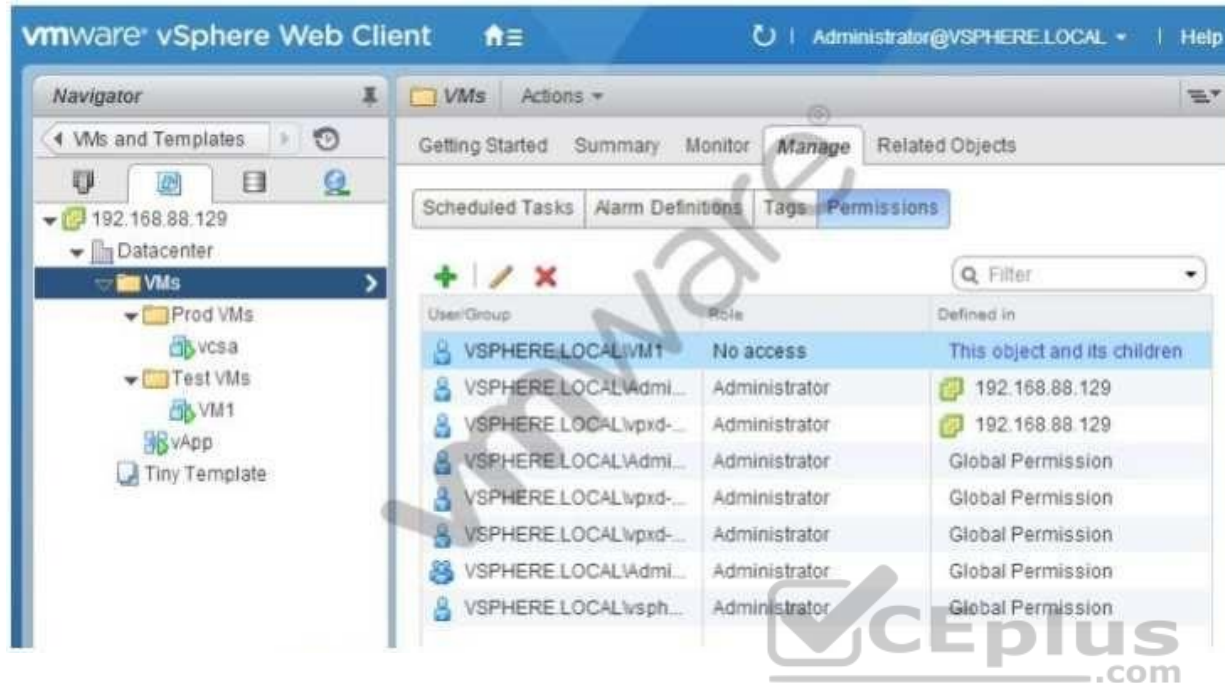


**Explanation/Reference:**

Reference: <https://docs.vmware.com/en/VMware-vSphere/6.0/com.vmware.vsphere.networking.doc/GUID-A4F1BF4B-8199-45A1-9578-1E4B6B08DAB0.html>

**QUESTION 115**

A user **VM1** requires console access to virtual machine **VM1**, as shown in the Exhibit:



Based on the exhibit, what action would provide the minimum level of access needed to meet this requirement?

- A. Grant **Virtual machine user** access to the **Datacenter** with **Propagation to children** enabled.
- B. Modify the permission for user **VM1** on the **VMs** folder to the **Virtual machine user** role.
- C. Remove the **No Access** permission for user **VM1** from the **VMs** folder.
- D. Grant **Virtual machine user** access to the **Test VMs** folder.

**Correct Answer:** B

**Section:** (none)

**Explanation**

**Explanation/Reference:**



<https://vceplus.com/>

